

DYNATEK

dyna performance electronics

STERS • CRANK TRIGGERS • IGNITION • FUEL INJECTION CONTROLLERS • REV LIMITERS • PLUG WIRES • SWITCHES • IGNITION



2013 PRODUCT CATALOG



ATV & OFF-ROAD • HARLEY • METRIC CRUISERS • SPORTBIKE • DRAG RACING PRODUCTS

TABLE OF CONTENTS

2-3	NEW PRODUCTS
4-5	FI CONTROLLER
6-9	HARLEY PRODUCTS
10-11	CRUISER PRODUCTS
12-17	ATV PRODUCTS
18-20	SPORTBIKES/DYNA S
21-22	COILS/COIL KITS
23	ARC-2
24-25	DRAG RACING PRODUCTS
26-22	DRAG RACING ACCESSORIES

DYNATEK

dyna performance electronics

DYNATEK IS THE PERFORMANCE LEADER FOR QUALITY ELECTRONIC PRODUCTS IN THE MOTORCYCLE INDUSTRY. WITH THE HELP OF TOP RACERS AND MOTORCYCLE BUILDERS AROUND THE WORLD, DYNATEK HAS WORKED TO CREATE THE ELECTRONIC PRODUCTS NECESSARY TO SUPPORT THE MODERN MOTORCYCLE.

OUR GOAL IS TO CONTINUE TO EXPAND OUR SUPPORT OF MOTORCYCLE ENTHUSIASTS THROUGH ONGOING RESEARCH AND DEVELOPMENT AND NEW PRODUCT INTRODUCTIONS.

VISIT OUR WEBSITE, WWW.DYNAONLINE.COM FOR INFORMATION INCLUDING GENERAL PRODUCT

INTRODUCTIONS, ACCESS TO COMPLETE TECHNICAL DOCUMENTATION AND INSTRUCTION SHEETS FOR EVERY PRODUCT WE MANUFACTURE. THERE IS A REFERENCE SECTION FOR EACH PRODUCT THAT INCLUDES ANSWERS TO COMMON QUESTIONS AND APPLICATION HINTS. YOU CAN ALSO SEND YOUR OWN QUESTIONS DIRECTLY TO THE DYNATEK TECHNICAL STAFF VIA DYNA TEKMAIL: TECH@DYNAONLINE.COM

FREQUENTLY ASKED TEKMAIL QUESTIONS ALONG WITH RESPONSES ARE POSTED FOR REVIEW.

DYNA 2000-HDEFI FUEL AND IGNITION CONTROLLER

NEW PRODUCTS

Dynatek announces the new Dyna 2000-HDEFI ignition system. The new Dyna 2000-HDEFI is an ignition and fuel injection control module that plugs inline with the bike's stock ECM. The Dyna 2000 uses original equipment style connectors, so no splicing or cutting of the harness is required.

DYNA 2000-HDEFI FEATURES

IGNITION TIMING CONTROL-

Significant horsepower can often be made by making timing adjustments as well as being able to correct detonation problems that may occur. You can advance or retard your stock timing curve by +/- 10 degrees using the included Control Center software.

FUEL CONTROL-

The Dyna 2000-HDEFI allows for very specific fuel adjustment of the entire range of throttle openings and rpm combinations. Adjustments can also be based on additional inputs such as cylinder head temp or gear position. Also compatible with Power Commander maps.

INCREASED REV LIMIT-

The rev limiter is raised to 6200 RPM.

COMPATIBLE WITH THE DYNATUNE AUTO TUNING KIT-

The Dyna 2000-HDEFI can be used with the DynaTune autotune kit for on the fly automatic fuel adjustment.



Model	Year	Part Number
2000 HDEFI		
HARLEY DAVIDSON		
883 Sportster	2007-2013	DD2000-HD3EFI
1200 Sportster	2007-2013	DD2000-HD4EFI
XR1200	2009-2012	DD2000-HD5EFI
Touring Models	2008-2009	DD2000-HD6EFI
Touring Models	2010-2013	DD2000-HD7EFI
Softail Models	2007-2011	DD2000-HD8EFI
Softail Models	2012-2013	DD2000-HD9EFI
Softail Deluxe / Heritage	2009-2011	DD2000-HD10EFI
Dyna Models	2006-2011	DD2000-HD11EFI
Dyna Models	2012-2013	DD2000-HD12EFI
V-Rod	2008-2011	DD2000-HD13EFI
V-Rod	2012-2013	DD2000-HD14EFI

NEW PRODUCTS FOR 2013

DYNATUNE

NEW PRODUCTS

The DynaTune kit monitors the fuel mixture (by installing the included Wide Band O2 sensor(s) in the exhaust). It then sends this information to the Dynatek Control Module (either the Dynatek 3000 or Dyna FS Fuel and Ignition modules) and automatically corrects it as you ride, letting you feel the changes as they happen. Each map that we offer has preset Air/Fuel ratio target values included that we find to be the best overall settings. This lets you simply plug in the unit and let it do the work.

For advanced users who would like to change the Air/Fuel ratios from our baseline, they are fully adjustable. Each throttle opening/rpm combination is individually adjustable, so that you can have both fuel economy, during cruise, while maintaining peak output at larger throttle openings. For most models of bikes it is also possible to adjust the Air/Fuel ratios "per gear." This gives you total control of the fueling in every gear and throttle/rpm area if required.

The DynaTune kit can be configured to run and make adjustments at all times or by using the "map switch port" on the Dynatek Control Module you can set it up so that you can switch back and forth between the tuning mode and the base map settings. You can also configure the DynaTune kit to wait until the bike is at a certain operating temperature before beginning to make adjustments.

TWO DYNATUNE KITS ARE AVAILABLE:



THE DT-1 - A SINGLE CHANNEL KIT THAT INCLUDES A SINGLE WIDEBAND O2 SENSOR.



THE DT-2 - A DUAL CHANNEL KIT INCLUDES TWO WIDEBAND O2 SENSORS AND IS DESIGNED FOR TWIN CYLINDER MOTORCYCLES/ATVS THAT USE THE DYNATEK 3000 OR DYNATEK FS ALLOWING CONTROL OF TWO CYLINDERS SIMULTANEOUSLY.

QUICK SHIFTER

NEW PRODUCTS

The Dynatek Quick Shifter (DQS) connects to the new 2000SE, Dyna FS and Dyna 3000 Fuel and Ignition modules that allows full throttle, clutchless shifting. This is done by momentarily cutting the fuel and/or ignition, which unloads the transmission. During this time, the rider can shift up to the next gear without rolling off the throttle or using the clutch.

The amount of "kill time" is adjustable by the user via the Control Center software. The user can also set a minimum rpm for the system to function. This keeps the system from activating at too low of an rpm, such as low speed road riding.

This Dynatek Quick Shifter sensor mounts inline with the shift rod. The customer must provide the appropriate "length and thread" shift rod. This sensor is available in both "push" and "pull" styles depending on the direction the shift rod moves during an up shift. For most applications, a Shift Rod Kit is available.



DSO-2

Part Number	Description
QUICK SHIFTER SENSORS	
DSQ-2	PULL TYPE SENSOR
DSQ-3	PUSH TYPE SENSOR
QUICK SHIFTER SHIFT RODS	
32104060 Shift Rod A	UNIVERSAL TIE ROD, F-M6xM-M6
32104050 Shift Rod B	UNIVERSAL TIE ROD, M-M6xM-M6
32104030 Shift Rod C	UNIVERSAL TIE ROD, F-M6xM-M6
32105030 Shift Rod D	UNIVERSAL TIE ROD, F-M8xM-M6



QUICK SHIFTER SHIFT RODS

SHIFT ROD-C

SHIFT ROD-D

SHIFT ROD-B

SHIFT ROD-A

FI CONTROLLER

DYNATEK FI CONTROLLER

THROUGH DYNATEKS FUEL INJECTION CONTROLLER, THE FUEL CIRCUITS ON CURRENT VEHICLES CAN BE MODIFIED BOTH RICHER AND LEANER THAN STOCK BY AS MUCH AS +250% TO -100%* IN ANY PARTICULAR AREA OF THE POWER SPREAD. ALSO, UP TO 3 PRE-PROGRAMMED FUEL CURVE MAPS ARE ADJUSTABLE TO YOUR PREFERENCE.

Riders can literally select between a FI Controller Fuel Curve Map, custom-built maps, or even fine tune low, mid or high rpm ranges while sitting on the bike and without plugging in to a computer. Standard +/- 10% increments from selected map settings, on USB equipped models different ranges are available using the supplied Control Center software.



- USES OEM STYLE CONNECTORS AND HIGH QUALITY WIRING HARNESSSES.
- SMALL, LIGHTWEIGHT AND EASY-TO-FIT ON THE BIKE.
- PRE-PROGRAMMED WITH FI CONTROLLER FUEL CURVE MAPS SPECIFIC TO MAKE AND MODEL
- NO COMPUTER NECESSARY FOR MODIFYING FUEL MANAGEMENT.
- FULLY ADJUSTABLE COMPUTER COMPATIBILITY* FOR ULTIMATE TUNING AND PERSONALIZATION.
- SOFTWARE IS COMPATIBLE WITH DYNOJET'S POWER COMMANDER MAPS, SO YOU CAN DOWNLOAD POWER COMMANDER MAPS TO THE FI CONTROLLER.

* ONLY AVAILABLE WITH USB EQUIPPED MODELS, OLDER MODEL FI CONTROLLER ONLY HAVE -100%/+100% FUEL ADJUSTABILITY WITH ALL CHANGES MADE BY ADJUSTING THE POTENTIOMETERS- SEE INSTALLATION GUIDE FOR FURTHER DETAILS.

COMPUTING POWER FOR USB EQUIPPED MODELS ONLY

For racers and riders looking for the ultimate in precise adjustment and fuel map customization and creation, Dynatek's Control Center Software allows PC-based Fuel Curve map creation at 250-rpm increments and 10 different throttle positions. Modification parameters vary upon make and model of machine and fuel changes made in these increments are automatically interpolated between the rpm and throttle position ranges ensuring a smooth final power curve.

Users can load up to 3 of their personally built Fuel Curve Maps into the FI Controller and select between them while in the saddle— eliminating the need to “re-boot” with the computer every time a new map is desired.



DYNATEK FI CONTROLLER APPLICATIONS

Year	Model	USB Equipped	Part Number
ATV/UTV MODELS			
ARCTIC CAT			
2010	450H1	YES	DFCA-18
2009-2010	550H1	YES	DFCA-21
2006-2010	700 EFI		DFCA-14
2008-2010	700H1	YES	DFCA-22
2008	Prowler 700	YES	DFCA-19
2008-2010	Thundercat 950	YES	DFCA-20
2009-2010	Prowler 1000	YES	DFCA-23
BOMBARDIER/CAN-AM			
2006-2010	Outlander/Renegade 800		DFCA-5
2008-2010	Outlander 400	YES	DFCA-29
2008-2010	DS450	YES	DFCA-24
2007-2010	Outlander 500	YES	DFCA-25

Year	Model	USB Equipped	Part Number
BOMBARDIER/CAN-AM			
2006-2009	Outlander 650	YES	DFCA-26
2010	Outlander 650	YES	DFCA-27
2011	Commander 800	YES	DFCA-48
2011	Commander 1000	YES	DFCA-49
HONDA			
2007-2012	Rancher 420		DFCA-10
2006-2012	Rincon		DFCA-1
2009	Big Red	YES	DFCA-31
2008-2009	TRX700XX	YES	DFCA-32
KAWASAKI			
2008-2012	KFX450R		DFCA-11
2008-2012	Brute Force 750	YES	DFCA-33
2009-2012	Teryx 750	YES	DFCA-34

FI. CONTROLLER

APPLICATIONS



Year	Model	USB Equipped	Part Number
POLARIS			
2004	700 Twin EFI		DFCA-7
2006-2009	Ranger XP	YES	DFCA-50
2005-2008	700 Twin EFI		DFCA-8
2005-2008	800 Twin EFI		DFCA-9
2010	Ranger 800 XP	YES	DFCA-39
2009-2011	850 Twin	YES	DFCA-37
2008-2009	RZR		DFCA-15
2009-2010	RZR-S		DFCA-17
2011-2012	RZR-S	YES	DFCA-47

SUZUKI			
2009-2012	LTZ400	YES	DFCA-44
2006-2007	LT-R450		DFCA-2
2008-2010	LT-R450	YES	DFCA-43
2007-2009	KingQuad 450		DFCA-12
2009	KingQuad 500	YES	DFCA-42
2005-2008	KingQuad 700	YES	DFCA-3
2008-2012	KingQuad 750	YES	DFCA-41

YAMAHA			
2009-2012	YZF-450R/X	YES	DFCA-46
2009-2012	Grizzly 550	YES	DFCA-45
2006-2012	Raptor 700R	YES	DFCA-4
2007-2012	Grizzly 700	YES	DFCA-13
2008-2012	Rhino 700	YES	DFCA-16

HARLEY DAVIDSON MODELS			
1997-1998	Touring Models w/ EVO Eng		DFCH-1
1999-2001	Twin Cam Touring Models	YES	DFCH-2
2002-2005	Twin Cam Touring Models		DFCH-3
2001-2005	Softtail & Dyna Models		DFCH-4
2002-2013	V-Rod Models		DFCH-5
2006	Twin Cam Touring Models	YES	DFCH-6
2006	Softtail Models	YES	DFCH-7
2006	Dyna Models	YES	DFCH-8
2007	Twin Cam Touring Models	YES	DFCH-9
2007-2011	Softtail Models		DFCH-10
2007-2011	Dyna Models	YES	DFCH-11
2007-2013	Sportster 883	YES	DFCH-12
2007-2013	Sportster 1200	YES	DFCH-13
2008	Twin Cam Touring Models		DFCH-14
2009-2013	Twin Cam Touring Models	YES	DFCH-15

METRIC SPORTBIKE AND CRUISER MODELS			
HONDA			
2002-2008	VTX1800 (ALL C, Retro & Neo Models)		DFCM-1
KAWASAKI			
1999-2008	Vulcan 1500 – Drifter, Nomad, Classic, Mean Streak		DFCM-2
2004-2008	Vulcan 1600 – Mean Streak		DFCM-3
2004-2007	Vulcan 2000	YES	DFCM-4
2003-2007	Vulcan 1600 Classic		DFCM-8

SUZUKI			
2005-2008	Suzuki C50, C50SE & M50		DFCM-5
2005-2013	Suzuki C90		DFCM-6
2004-2008	Suzuki Marauder		DFCM-3
2006-2013	Suzuki M109R		DFCM-11
YAMAHA			
2002-2010	Road Star Warrior		DFCM-7
2006-2013	Stratoliner/Roadliner		DFCM-10
2007-2013	XV1300		DFCM-9

DIRT/OFF-ROAD BIKE MODELS

HONDA			
2010-2011	CRF250R	YES	DFCD-7
2009-2011	CRF450R	YES	DFCD-1

KAWASAKI			
2009-2012	KX450F	YES	DFCD-2

SUZUKI			
2010-2012	RMZ250	YES	DFCD-6
2008-2012	RMZ450	YES	DFCD-3
2010-2011	RMZ450Z	YES	DFCD-8

YAMAHA			
2010-2012	YZ450F	YES	DFCD-4

SCOOTER MODELS

HONDA			
2006-2009	SWT400	YES	DFCS-5

SUZUKI			
2005-2009	Burgman 400	YES	DFCS-6
2004-2009	Burgman 650	YES	DFCS-7

YAMAHA			
2007-2009	C3	YES	DFCS-8
2009-2010	Zuma 125	YES	DFCS-9
2007-2009	Morphous	YES	DFCS-10
2004-2009	Majesty 400	YES	DFCS-11
2008-2010	T-Max 500	YES	DFCS-12



HARLEY PRODUCTS

DYNA 2KI PROGRAMMABLE / DYNA 2000P

PROGRAMMABLE FEATURES

- PART THROTTLE CURVE
- REV LIMIT
- DEAD CRANKING REV'S
- SINGLE / DUAL FIRE*
- WIDE OPEN THROTTLE CURVE
- REAR CYLINDER OFF SET
- SECURITY PIN #
- RETARD MODE

* Models DD2000-HD2EP & DD2000-HD2E8P are Dual Fire only

DOWNLOADABLE FEATURES

- # OF ENGINE STARTS
- TOTAL OPERATING TIME
- TIME NEAR REV LIMIT
- LONGEST CONTINUOUS WOT & ENDING @ RPM
- ENGINETIME @ WOT
- MAXIMUM ENGINE SPEED

SELECTABLE FEATURES

- ADVANCE CURVE
 - RETARD MODE
 - REV LIMIT
 - SINGLE/DUAL FIRE*
- * Models DD2000-HD2EP & DD2000-HD2E8P are Dual Fire only

STATUS LED INDICATIONS

- POWER UP
- PICK UPS
- RETARD MODE
- PROGRAMMING FUNCTION
- OVERCURRENT PROTECTION
- VOES SWITCH OPERATION
- STATIC TIMING

DYNA 2KI PROGRAMMABLE IN-CONE IGNITION

The Dyna 2000i is a completely self contained programmable ignition system that mounts entirely in the cone on EVO and Shovelhead engines. Offering all of the same features as the 2000P system as well as PC Programmability the Dyna 2000i is the answer for all your ignition needs.

DYNA 2000P DIGITAL IGNITION MODULE

The Dyna 2000 Digital Ignition System for Harley-Davidson Motorcycles, which has become the standard for performance and versatility in the Harley aftermarket, has been enhanced to include even more features. These new modules include expanded advance curve functionality with the option to use vacuum advance compensation via a V.O.E.S. switch. The new modules also include a special retard mode for use with turbocharged and nitrous bikes.

The Dyna 2000 allows selection between four different advance curves. The new modules offer a quick curve which simulates a mechanical advancer for hot rod motors. There are also four independent rev limiter settings from 6000 to 7500 rpm. The new Retard Mode allows selection of ignition retard of 5, 7, or 10 degrees upon activation of retard input. Dyna 2000 ignition modules use the stock factory pick-up and simply plug into the existing factory wiring harness on 1991-1998 model bikes. An extension harness is available for installing the Dyna 2000 on 1990 and earlier bikes.



● DYNA S ELECTRONIC IGNITION

The Dyna S is a complete self-contained electronic ignition system built with the latest state-of-the-art engineering. The Dyna S is completely housed behind the ignition cover and uses a magnetic rotor with the original spark advancer, so the factory advance curve is maintained. Must be used with mechanical advance unit, not included with the Dyna S.

AVAILABLE IN DUAL AND SINGLE FIRE SYSTEMS.



● TC88-2P DIGITAL IGNITION

Dynatek's TC88-2P Digital Performance Ignition signals a new era in Twin Cam ignition power and capability. The TC88-2P enhances the power of the Single Fire ignition by allowing selection between 16 programmable advance curves, covering the entire range of engine modifications. From stock to insanely modified engines, the TC88-2P provides the widest range and highest level of advance curve functionality for Twin Cam available in today's market. There are also eight different rev limiter settings from 5750-7250 rpm. All TC88-2P functions have full digital accuracy to insure maximum performance with unparalleled quality. The TC88-2P is also fully PC Programmable for custom tuning.



● TC88-3 AND DSPT-1 IGNITIONS

The TC88-3 and DSPT-1 are Single Fire, fully PRE-programmed performance ignitions with 16 programmable advance curves and 8 Rev limiter settings. All functions feature full digital accuracy and full J1850 compatibility with all stock devices. Coil compatibility from stock to performance (less than 1 ohm resistance). Coil current constantly monitored to provide constant full spark energy. Utilizes all stock sensors, stock OE connectors and the stock OE mounting. Reverse battery and spike protection are also built in and these ignitions feature a 1 year warranty.



HARLEY PRODUCTS

DYNA 2000-HDEFI FUEL AND IGNITION CONTROLLER

Dynatek announces the new Dyna 2000-HDEFI ignition system. The new Dyna 2000-HDEFI is an ignition and fuel injection control module that plugs inline with the bike's stock ECM. The Dyna 2000 uses original equipment style connectors, so no splicing or cutting of the harness is required.

- SEE PAGE 23 FOR AVAILABLE KITS



DYNATEK FI CONTROLLER

FEATURES

- OEM PLUG AND PLAY CONNECTORS
- DYNO TESTED AND DEVELOPED BASE MAPS
- LOW, MID AND HIGH RANGE ADJUSTMENTS THAT ALLOW YOU TO RICHEN OR LEAN DIFFERENT PARTS OF THE FUEL CURVE WITH NO COMPUTER REQUIRED

The Dynatek Fuel Injection Controller is a plug in module that offers 3 user selectable base fuel curves that are designed to improve engine operation and can be modified to suit a wide variety of modifications. These adjustments are made via 3 potentiometers that adjust the fuel curve in the proper ranges for the application. Fuel mixture can be enriched or leaned as required.

The FI Controller uses the factory connectors for easy installation and there is no PC required for tuning or adjusting the fuel curves. There are no modifications to the stock ECU and removing the FI Controller returns the vehicle to the factory configuration.



Year	Model	Part Number
HARLEY DAVIDSON MODELS		
1997-1998	Touring Models w/ EVO Eng	DFCH-1
1999-2001	Twin Cam Touring Models	DFCH-2
2002-2005	Twin Cam Touring Models	DFCH-3
2001-2005	Softtail & Dyna Models	DFCH-4
2002-2013	V-Rod Models	DFCH-5
2006	Twin Cam Touring Models	DFCH-6
2006	Softtail Models	DFCH-7
2006	Dyna Models	DFCH-8
2007	Twin Cam Touring Models	DFCH-9
2007-2013	Softtail Models	DFCH-10
2007-2009	Dyna Models	DFCH-11
2007-2013	Sportster 883	DFCH-12
2007-2013	Sportster 1200	DFCH-13
2008	Twin Cam Touring Models	DFCH-14
2009-2013	Twin Cam Touring Models	DFCH-15

DYNATEK TWIN FIRE IGNITION COILS

DYNATEK ANNOUNCES THE AVAILABILITY OF THE NEW DYNATEK COIL FOR 2001-2006 HARLEY-DAVIDSON EFI BIG TWINS.

Like all Dynatek coils the new DC6-7 offers improved spark performance and the DC6-7 incorporates the Ion sense feedback for perfect compatibility with the stock Harley EFI ECU.

Dyna Twin Fire Ignition Coils will enhance the benefits of, and are the perfect compliment to the DD2000-HD1EP and Dyna 2Ki Digital Ignition Systems. The DC6-4 coil has all the features users have come to expect from a Dyna coil; high voltage (greater than 30,000 volts) with fast rise times, and high energy. The Dyna Twin Fire coil is the new standard for performance and packaging efficiency for single fire ignition installations on Harley-Davidson® Motorcycles. The Twin Fire coil incorporates two individual performance ignition coils into one easy to mount package. This solves the problem of trying to mount two ignition coils on Harleys when installing single fire ignition systems. The DC6-5 Twin Fire Mini coil is only slightly larger than the stock Harley coil and uses the stock mounting bracket.

**FOR MORE INFO ON HARLEY REPLACEMENT COILS REFER TO PAGES 21-22.
NOT FOR USE WITH DYNA S IGNITION SYSTEM**



DC6-5

DYNATEK H-D IGNITION APPLICATIONS

Model Year	Part #	Single/ Dual Fire	# of Advance Curves	# of Retard Curves/ Degrees	Ignition Plug & Play	Programming Kit #	Digital Outputs	Replacement Coils
EVO TYPE ENGINES								
DIGITAL IN CONE IGNITIONS (DYNA 2K-I)								
1970-1998 (CARB)	D2KI-1P	sgl plug/sgl fire	8	3 (10,7,5)	NO	DIPK-1,DIPK-7 & PH-1	1/TACH	1-10
1998-2003 Sportster								
DYNA 2K-1 IGNITION & COIL KITS								
1970-1998 (CARB)	D2KI-2P	sgl plug/sgl fire	8	3 (10,7,5)	NO	DIPK-1,DIPK-7 & PH-1	1/TACH	5 INCLUDED
1970-1998 (CARB)	D2KI-3P	dual plug/sgl fire	8	3 (10,7,5)	NO	DIPK-1,DIPK-7 & PH-1	1/TACH	1 INCLUDED
1970-1998 (CARB)	D2KI-4P	dual plug/dual fire	8	3 (10,7,5)	NO	DIPK-1,DIPK-7 & PH-1	1/TACH	4 INCLUDED
1970-1998 (CARB)	D2KI-5P	sgl plug/sgl fire	8	3 (10,7,5)	NO	DIPK-1,DIPK-7 & PH-1	1/TACH	10 INCLUDED
DIGITAL IGNITION MODULE (DYNA 2000)								
Sportsters, FLH to 93, FXR to 95	DD2000-HD1EP	BOTH	8	3 (10,7,5)	YES	DIPK-2	1/TACH	1 - 10
All 94-later Sportsters FLH, 95-later FXR	DD2000-HD1E8P	BOTH	8	3 (10,7,5)	YES	DIPK-3	1/TACH	1 - 10
Sportsters, FLH to 93, FXR to 95	DD2000-HD2EP	DUAL	8	3 (10,7,5)	YES	DIPK-2	1/TACH	1 - 8
All 94-later Sportsters FLH, 95-later FXR	DD2000-HD2E8P	DUAL	8	3 (10,7,5)	YES	DIPK-3	1/TACH	1 - 8
7 TO 8 PIN ADAPTER 1009002 EXTENSION HARNESS 1009001								
DYNA 2000 IGNITION & TWINFIRE COIL KITS								
Sportsters, FLH to 93, FXR to 95	SFK-1	BOTH	8	3 (10,7,5)	YES	DIPK-2	1/TACH	10 INCLUDED
All 94-later Sportsters FLH, 95-later FXR	SFK-3	BOTH	8	3 (10,7,5)	YES	DIPK-3	1/TACH	10 INCLUDED
POINTS REPLACEMENT (DYNA S)								
1970-1998 (CARB)	DS6-1	DUAL	1 / ADVANCER	NONE	NO	N/A	NONE	11
1970-1998 (CARB)	DS6-2	SINGLE	1 / ADVANCER	NONE	NO	N/A	NONE	13
DYNA S IGNITION & COIL KIT								
1970-1998 (CARB)	DSK6-1	DUAL	1 / ADVANCER	NONE	NO	N/A	NONE	11 INCLUDED
1970-1998 (CARB)	DSK6-2	SINGLE	1 / ADVANCER	NONE	NO	N/A	NONE	13 INCLUDED
TWIN CAM, 883 & 1200 TYPE ENGINES								
TWIN CAM / SPORTSTER								
1999-2003	TC88-2P	SINGLE	16	0	YES	DIPK-4	NONE	14,15,16,17,18
2004-2006	TC88-3	SINGLE	16	0	YES	N/A	NONE	14,15,16,17,18
883 /1200								
2004-2006	DSPT-1	SINGLE	16	0	YES	N/A	NONE	14,15,16,17,18

DYNATEK HARLEY-DAVIDSON REPLACEMENT COILS

TABLE REFERENCE	COIL PART #	TABLE REFERENCE	COIL PART #	TABLE REFERENCE	COIL PART #	TABLE REFERENCE	COIL PART #	TABLE REFERENCE	COIL PART #
1	DC1-1	5	DC3-1	9	DC6-4	13	DC10-1	17	DC12-2
2	DC1-2	6	DC3-2	10	DC6-5	14	DC11-1	18	DC6-6
3	DC1-3	7	DC3-3	11	DC7-1	15	DC11-2	19	DC6-7
4	DC2-1	8	DC6-1	12	DC8-1	16	DC12-1		



DC1-2 MINI

DC3-2 MINI

DC6-6

DC7-1

DC11-1 MINI

DC12-1 MINI

PROGRAMMING KITS & HARNESSES

Take your Dyna Ignition to the next level with the Curvemaker Programming Kit that works with the D2KI-P, TC88-2P, & 2000-HDP. Now over the counter buyers, performance tuning shops and engine builders can find all that they need to properly tune their bikes.



DIPK-1
PROGRAMMING KIT

DIPK-7
PROGRAMMING KIT

Kit Description	Part Number
PROGRAMMING KITS/HARNESSES	
PROGRAMMING KIT D2KI-P AND ALL D2KI KITS W/COILS	DIPK-1
PROGRAMMING HARNESS (BIKE SIDE STUB) D2KI ONLY	PH-1
PROGRAMMING CABLE ONLY (DIPK-1 KIT) PC TO MODULE	PH-5
PROGRAMMING KIT 2000-HD1EP, 2000HD2EP & SFK-1	DIPK-2
PRO. CABLE ONLY (DIPK-2 KIT) PC TO MODULE	PH-2
PROGRAMMING KIT 2000-HD1E8, 200-HD2E8 AND SFK-3	DIPK-3
PRO. CABLE ONLY (DIPK-2 KIT) PC TO MODULE	PH-3
PROGRAMMING KIT TC88P	DIPK-4
PRO. CABLE ONLY (DIPK-4 KIT) PC TO MODULE	PH-4
PROGRAMMING KIT 2000 4 CYLINDER	DIPK-5
USB PROGRAMMING KIT DFS & 2000I APPLICATIONS*	DIPK-7

* REQUIRES PH-1 ADAPTER

METRIC CRUISERS

DYNA 3000

HIGH PERFORMANCE DIGITAL IGNITIONS

The Dyna 3000 Digital Performance Ignition module is a plug & play model for metric cruisers. The Dyna 3000 system combines state of the art microprocessor technology with direct mounting on factory locations so you can maximize engine performance by setting ignition timing to fit your specifications. 8 adjustable timing curves and a fully adjustable rev limiter allows even more flexibility in tailoring the ignition to your needs.

Dyna 3000 Cruiser Edition Digital Performance Ignition gives you increased power, torque and peak horsepower over the stock factory ignition. Experience larger gains and greater engine efficiency when used with after-market performance products. The Dyna 3000 makes it all work better, every time.

FEATURES:

- 8 SELECTABLE ADVANCE CURVES
- 8 SELECTABLE REV LIMITS
(INCREASED REV LIMITS OVER STOCK)
- USES ALL FACTORY SENSORS
- MAP SENSOR OPERATION
(APPLICABLE MODELS ONLY)
- EASIER STARTING
- PLUG AND RIDE - 5 MINUTE
INSTALLATION (ON MOST MODELS)
- MOUNTS DIRECTLY TO FACTORY
LOCATION
- USES FACTORY COILS, OR DYNA
COILS
- REVERSE BATTERY PROTECTION
- RETARD MODE - FOR NITROUS OR
TURBO APPLICATIONS
- STATUS LED: POWER-UP / PICKUPS /
TPS OPERATION



DYNA 3000 FUEL & IGNITION

FUEL INJECTION CONTROLLER

We now offer the Dyna 3000 in a Fuel and Ignition controller.

This new edition now combines both fuel and ignition tuning into one device and comes equipped with factory connectors for easy installation.

FEATURES:

- PC PROGRAMMABLE FUEL & IGNITION MAPS
- 2 POSITION MAP SWITCHING FUNCTION
- GEAR POSITION INPUT
- ANALOG INPUT FOR 0-5 VOLT INPUT FOR BOOST
MAPPING
- INDIVIDUAL CYLINDER MAPPING
- -100/+250% FUEL ADJUSTMENT RANGE
- CAN USE POWER COMMANDER MAPS
- SELF TUNING WITH THE DYNA TUNE AUTOTUNE KIT.



DYNATUNE

WIDEBAND O2 AUTOTUNE CONTROLLER

The DynaTune kit monitors the fuel mixture (by installing the included Wide Band O2 sensor(s) in the exhaust). It then sends this information to the Dynatek 3000 Fuel and Ignition and automatically corrects it as you ride, letting you feel the changes as they happen. Each map that we offer has preset Air/Fuel ratio target values included that we find to be the best overall settings. This lets you simply plug in the unit and let it do the work.

- SEE PAGE 3 FOR DETAILS

Two DynaTune kits are available:

The DT-1 - Single channel kit

The DT-2 - Dual channel kit



DYNA REPLACEMENT COILS

Dynatek ignition coils are high tech, top quality coils, designed for maximum performance. They produce spark voltages in excess of 30,000 volts and spark energies second to none. Dynatek coils are available in a wide variety of resistances and output configurations to allow easy replacement of stock coils.

- SEE PAGE 23 FOR
AVAILABLE KITS



QUICK SHIFTER

The Dynatek Quick Shifter (DQS) connects to the new 2000SE and 3000 Fuel and Ignition modules to allow full throttle, clutchless shifting.

This sensor is available in both "push" and "pull" styles depending on the direction the shift rod moves during an up shift. For most applications, a Shift Rod Kit is available.

- SEE PAGE 3 FOR DETAILS



DYNA 3000 AND DYNA 3000 FUEL & IGNITION APPLICATIONS

Model	Year	Part Number	Fuel & Ignition Model	Advance Curves	# of Retard Curves/ Degrees	# of Rev Limits	LED Indicators	Replacement Coils
HONDA								
Shadow/VT1100 C2	1997-2000	D3K1-2		10	10 / 1 TO 10	9	A,B,E	DC1-2*
Shadow Ace/VT1100 C2	1997-2000	D3K1-2		10	10 / 1 TO 10	9	A,B,E	DC1-2*
Shadow America/VT1100 C2	1997-1998	D3K1-2		10	10 / 1 TO 10	9	A,B,E	DC1-2*
Shadow Aero/CT1100 C2	1998-2000	D3K1-2		10	10 / 1 TO 10	9	A,B,E	DC1-2*
Shadow Ace/VT1100 D2	1999	D3K1-2		10	10 / 1 TO 10	9	A,B,E	DC1-2*
Fury	2010-2011	D3K1-6	YES					
KAWASAKI								
Vulcan Drifter 800	2000-2006	D3K2-1		8	N/A	8	A,B,C	DC1-2*
Vulcan 1500 G	1999-2004	D3K2-2		8	N/A	8	A,B,C	DC1-2*
VN 1700 Classic, Voyager, Nomad, Vaquero	2009-2011	D3K2-3	YES					
Vulcan 2000	2008-2011	D3K2-4	YES					
SUZUKI								
Intruder 1400	1990-1995	D3K3-1		8	N/A	8	A,B,D	DC3-2*
Intruder 1400	1996-2007	D3K3-2		8	N/A	8	A,B,D	DC3-2*
Intruder 1500	1999-2004	D3K3-4		8	N/A	8	A,B,C	DC3-2*
YAMAHA								
V-Star 650	1998-2003	D3K7-1		8	N/A	8	A,B,C	DC3-2*
V-Star 650 (49 State Only)	2004-2005	D3K7-1		8	N/A	8	A,B,C	DC3-2*
V-Star 1100	1999-2003	D3K7-2		8	N/A	8	A,B,C	DC3-2*
V-Star 1100 (49 State Only)	2004-2005	D3K7-2		8	N/A	8	A,B,C	DC3-2*
V-Star 1100 (49 State Only)	2005-2008	D3K7-8		8	N/A	8	A,B,C	DC3-2*
Road Star	1999-2007	D3K7-3		8	4 / 3,6,9,12	8		DC4-1*
Road Star	2008-2013	D3K7-10						
Road Star Warrior	2003-2009	D3K7-11	YES					
Royal Star	1996-2001	D3K7-4		8	N/A	8	A,B,C	DC1-2*
Venture/Royalstar Venture/Rstd	1999-2008	D3K7-5		8	N/A	8	A,B,C	DC3-2*
V-Max	1990-2007	D3K7-6		8	N/A	8	A,B,D	DC3-2*
XV 1300	2008-2013	D3K7-9	YES					

* = SOME MOUNTING FABRICATION MAY BE REQUIRED

LED INDICATORS

Indicates Power Up	A
Indicates Pickups	B
Indicates Tps Operation	C
Indicates Map Sensor Operation	D
Indicates Retard Function	E

FI CONTROLLER

FEATURES

- OEM PLUG AND PLAY CONNECTORS
- DYNO TESTED AND DEVELOPED BASE MAPS
- LOW, MID AND HIGH RANGE ADJUSTMENTS THAT ALLOW YOU TO RICHEN OR LEAN DIFFERENT PARTS OF THE FUEL CURVE WITH NO COMPUTER REQUIRED

The Dynatek Fuel Injection Controller is a plug in module that offers 3 user selectable base fuel curves that are designed to improve engine operation and can be modified to suit a wide variety of modifications. These adjustments are made via 3 potentiometers that adjust the fuel curve in the proper ranges for the application. Fuel mixture can be enriched or leaned as required.

SEE PAGE 4 FOR DETAILS



YEAR MODEL PART NUMBER

METRIC SPORTBIKE AND CRUISER MODELS

HONDA		
2002-2008	VTX1800 (ALL C, Retro & Neo Models)	DFCM-1
KAWASAKI		
1999-2008	Vulcan 1500 – Drifter, Nomad, Classic, Mean Streak	DFCM-2
2004-2008	Vulcan 1600 – Mean Streak	DFCM-3
2004-2008	Vulcan 2000	DFCM-4
2003-2007	Vulcan 1600 Classic	DFCM-8
SUZUKI		
2005-2008	Suzuki C50, C50SE & M50	DFCM-5
2005-2013	Suzuki C90	DFCM-6
2004-2008	Suzuki Marauder	DFCM-3
2006-2013	Suzuki M109R	DFCM-11
YAMAHA		
2002-2010	Road Star Warrior	DFCM-7
2006-2013	Stratoliner/Roadliner	DFCM-10
2007-2013	XV1300	DFCM-9

ATV/OFF-ROAD PRODUCTS

DYNA FS DIGITAL IGNITION

Dynatek offers the Dyna FS ignition system for ATV's, Motocross, Supermoto and Off Road motorcycles. With features such as adjustable advance curves, adjustable rev limiter, increased spark energy and PC programmability with the optional Curvemaker Programming Kit, the Off Road racer can tune the ignition system to match their modifications and track conditions for maximum performance.

PROGRAMMABLE FEATURES

- PROGRAMMABLE TIMING CURVES (4)*
- PROGRAMMABLE REV LIMITS
- INCREASED SPARK ENERGY
- IMPROVED THROTTLE RESPONSE
- EASIER STARTING
- TACH OUTPUT*
- LAUNCH LIMITER*
- PLUG-IN MODULE REPLACEMENT
- DATA LOGGING*
- SHIFT KILL INTERRUPT* - For clutchless shifting
- EXTERNAL CURVE SELECTOR SWITCH - Ignition is pre-programmed with 4 timing curves that can be changed with the External Curve Selector Switch.
- PROGRAMMABLE RPM ACTIVATED OUTPUTS (2) - Can be used for Nitrous Activation, Shift Light, Auto Shifter, or Boost Control.

NON-PROGRAMMABLE FEATURES

- IMPROVED TIMING CURVES
 - HIGHER REV LIMIT
 - REMOVED REVERSE REV LIMIT
 - INCREASED SPARK ENERGY
 - IMPROVED THROTTLE RESPONSE
 - EASIER STARTING
 - OVERRIDES BELT INDICATOR - For full performance at all times
 - PLUG-IN MODULE REPLACEMENT
- *= Not available on all models, check table for exact options by model



DFS1-15P
HONDA TRX450R



DFS7-13
YAMAHA
RHINO 660



DYNA FS FUEL AND IGNITION

We now offer the Dyna FS in a Fuel and Ignition controller. This new edition now combines both fuel and ignition tuning into one device and comes equipped with factory connectors for easy installation

NEW FUEL AND IGNITION MODEL FEATURES

- PC PROGRAMMABLE FUEL & IGNITION MAPS
- 2 POSITION MAP SWITCHING FUNCTION
- GEAR POSITION INPUT
- ANALOG INPUT FOR 0-5 VOLT INPUT FOR BOOST MAPPING
- INDIVIDUAL CYLINDER MAPPING
- -100/+250% FUEL ADJUSTMENT RANGE
- CAN USE POWER COMMANDER MAPS
- SELF TUNING WITH THE DYNA TUNE AUTOTUNE KIT

DFS9-4
POLARIS
RZR,RZR-S AND RZR-4



DYNA FS APPLICATIONS

Model	Programmable	Remote Serial Programmer/USB	Fuel & Ignition Model	Year	Part #	# of Timing Curves	# of REV Limits	Tach Output	RPM Switch Outputs	Shift Tether Kill Input	Launch Limiter	Coil Kit	Curve Maker Kit	Ignition Type
ARCTIC CAT														
Arctic Cat 650				2004-2006	DFS10-1	1	1	No	0	No	No			1
DVX 400	PRG			2002-2004	DFS10-3P	4	4	Yes	2	No	Yes		1	1
Prowler 650				2006-2009	DFS10-4	1	1	No	2	No	No	DCK10-1		1
AC650-H1				2006-2010	DFS10-5	1	1	No	2	No	No			1
Arctic Cat Prowler 700		RSP		2008-2010	DFS10-6	1	1	No	2	No	Yes	DCK10-2	3	2
Arctic Cat XTZ1000		RSP		2009-2010	DFS10-7	1	1	No	1	No	No	DCK10-3	3	2
1000cc ATV, Thundercat, Mudpro	PRG	RSP		2008-2009	DFS10-8	1	1	No	1	No	No	DCK10-7	3	2
Thundercat (Fuel & Ignition)			Yes	2008-2013	DFS10-10									
700i ATV	PRG	RSP		2009-2012	DFS10-11	1	1	No	1	No	No	DCK10-8	3	2
BOMBARDIER/CAN AM														
Baja 650/2000-2002 DS650				2000-2001	DFS11-1	1	1	No	0	No	No			1
Baja 650/2000-2002 DS650	PRG			2000-2001	DFS11-1P	4	1	Yes	2	Yes	Yes		1	1
Baja 650/2003-2006 DS650				2002-2005	DFS11-2	1	1	No	0	No	No			1
Baja 650/2003-2006 DS650	PRG			2002-2005	DFS11-2P	4	1	Yes	2	Yes	Yes		1	1
Commander 800/1000 (Fuel & Ignition)	PRG		Yes	2011-2012	DFS11-3	1	1	No	No	No	Yes	DCK11-1		

DYNA FS APPLICATIONS

Model	Programmable	Remote Serial Programmer/ USB	Fuel & Ignition Model	Year	Part #	# of Timing Curves	# of REV Limits	Tach Output	RPM Switch Outputs	Shift Tether Kill Input	Launch Limiter	Coil Kit	Curve Maker Kit	Ignition Type
HONDA														
XR50 / XR80 (Low Cost)				ALL YEARS	DFS1-12	1	1	No	0	No	No			3
TRX250R (Low Cost)				1986-1989	DFS1-11	1	1	No	0	No	No			3
CRF250R	PRG			2007	DFS1-17P	1	1	No	1	Yes	No		2,3	3
CRF250R (Fuel & Ignition)	PRG		Yes	2010-2012	DFS1-21	1	1	No	0	No	Yes			
TRX400EX	PRG			1999-2004	DFS1-10P	4	4	No	2	No	No		1	3
TRX400EX	PRG			2005-2008	DFS1-14P	4	4	No	2	No	No		1	3
TRX400EX (Low Cost)				1999-2008	DFS1-10	1	1	No	0	No	No			3
TRX450R	PRG			2004-2005	DFS1-13P	4	4	Yes	1	No	No	DCK1-2	1	3
TRX450R				2004-2005	DFS1-13	1	1	No	0	No	No	DCK1-2		3
TRX450R				2006	DFS1-15	1	1	No	0	No	No	DCK1-2		4
TRX450R	PRG			2006	DFS1-15P	1	1	No	0	No	No	DCK1-2	1	4
CRF450R	PRG			2007	DFS1-18P	1	1	No	1	Yes	No		2,3	3
CRF450R (Fuel & Ignition)	PRG		Yes	2010-2012	DFS1-22	1	1	No	0	No	Yes			
TRX650 Rincon				2003-2005	DFS1-16	2	1	No	0	No	No	DCK1-1		1
Honda Ruckus				2005-2008	DFS1-19	4	1	No	0	No	No	DCK1-6		1
KAWASAKI														
KX250F	PRG			2007	DFS2-16P	1	1	No	1	Yes	No		2,3	3
KFX 400	PRG			2003-2004	DFS2-11P	4	4	Yes	2	No	No	DCK2-5	1	1
KFX450		RSP		2008-2012	DFS2-21	1	1	No	2	No	Yes	DCK2-2	3	2
KX450F	PRG			2007	DFS2-17P	1	1	No	1	Yes	No	DCK2-3	2,3	3
Prairie 650				2002	DFS2-12	1	1	No	0	No	No	DCK2-1		1
Prairie 650/700				2003-2007	DFS2-13	1	1	No	0	No	No	DCK2-1		1
Prairie 650/700	PRG			2003-2007	DFS2-13P	4	1	Yes	2	No	Yes	DCK2-1	2,3	1
KFX700/V-Force				2003-2009	DFS2-14	1	1	No	0	No	No			1
Brute Force 650/750 (Carbureted)				2005-2011	DFS2-15	1	1	No	0	No	No	DCK2-1		1
Brute Force 650/750 (Carbureted)	PRG			2005-2011	DFS2-15P	4	4	Yes	2	No	Yes	DCK2-1	2,3	1
Brute Force 750 EFI		RSP		2008-2011	DFS2-20	1	1	No	1	No	No	DCK2-7	3	2
Teryx 750				2008	DFS2-18	1	1	No	0	No	No			1
Teryx 750	PRG			2008	DFS2-18P	4	4	No	1	No	No	DCK2-4	2,3	1
Teryx 750		RSP		2009-2011	DFS2-19	1	1	No	1	No	No	DCK2-5	3	2
KTM														
450SXF				2007	DFS13-2P	1	1	No	1	Yes	Yes		2,3	1
450/505/525 SZ/XC	PRG			2008-2011	DFS13-3P	1	1	No	1	Yes	Yes	DCK13-2	3	1
POLARIS														
Predator 500	PRG			2003-2004	DFS9-1P	4	4	Yes	2	Yes	Yes		1	1
Predator 500 & Outlaw 500	PRG			2005-2007	DFS9-2P	4	4	Yes	2	Yes	Yes		1	1
Ranger RZR, RZR-S		RSP		2008-2010	DFS9-3	1	1	No	0	No	No	DCK9-1	3	2
Ranger RZR, RZR-S (Fuel & Ignition)	PRG		Yes	2008-2010	DFS9-6	1	1	No	0	No	Yes			
Ranger RZR,RZR-S RZR-4 (Fuel & Ignition)	PRG		Yes	2012	DFS9-4	1	1	No	0	No	Yes			
XP900 (Fuel & Ignition)	PRG		Yes	2011	DFS9-5	1	1	No	0	No	Yes			
XP900	PRG		Yes	2012-2013	DFS9-8	1	1	No	0	No	Yes			
Sportsman XP550 (Fuel & Ignition)	PRG		Yes	2009-2012	DFS-7	1	1	No	0	No	Yes			

TABLE REFERENCE	IGNITION TYPE	TABLE REFERENCE	CURVE MAKER KIT
1	12V CDI	1	DFSPK-1
2	12V Inductive Ignition	2	DIPK-6
3	Magneto CDI	3	DIPK-7
4	Magneto CDI with 12V Input Required		

PRG = Programmable

RSP = Remote Serial Programmer
Available - DRSP-1

FS DIGITAL IGNITION APPLICATIONS

ATV/OFF-ROAD PRODUCTS

DYNA FS APPLICATIONS

Model	Programmable	Remote Serial Programmer/ USB	Fuel & Ignition Model	Year	Part #	# of Timing Curves	# of REV Limits	Tach Output	RPM Switch Outputs	Shift Tether Kill Input	Launch Limiter	Coil Kit	Curve Maker Kit	Ignition Type
SUZUKI														
LT-Z50/LT-Z90				2006-2010	DFS3-15R	1	1	No	0	No	No			3
RMZ250				2007	DFS3-13P	1	1	No	1	Yes	No		2,3	3
LTZ 400	PRG			2003-2004	DFS3-9P	4	4	Yes	2	Yes	Yes	DCK3-2	1	1
LTZ 400 (Low Cost)				2003-2004	DFS3-10	1	1	No	0	No	No	DCK3-2		1
LTZ400	PRG			2005-2008	DFS3-12P	4	4	Yes	2	Yes	Yes	DCK3-2	1	1
LTZ400 (Low Cost)				2005-2008	DFS3-12	1	1	No	0	No	No	DCK3-2		1
DRZ400				2000-2009	DFS3-16	1	1	No	0	No	No			1
DRZ400	PRG			2000-2009	DFS3-16P	4	1	Yes	2	Yes	Yes		1	1
DRZ400SM	PRG			2006-2009	DFS3-17P	4	1	Yes	2	No	Yes		1	1
RMZ450				2007	DFS3-14P	1	1	No	1	Yes	No		2,3	3
Twin Peaks				2004-2005	DFS3-11	1	1	No	0	No	No			1
YAMAHA														
Raptor 50				2006-2008	DFS7-19	1	1	No	0	No	No			3
Raptor/Grizzly/Badger 80				1992-2008	DFS7-18	1	1	No	0	No	No			3
Raptor 250				2008-2012	DFS7-28	1	1	No	0	No	No			1
YZ250F	PRG			2006-2008	DFS7-22P	1	1	No	1	Yes	No		2,3	3
Raptor 350 (Low Cost)				2004-2012	DFS7-16	1	1	No	0	No	No			1
YFM350 Warrior (Low Cost)				1997-2001	DFS7-17	1	1	No	0	No	No			1
Warrior 350 (Low Cost)				2002-2004	DFS7-15	1	1	No	0	No	No			1
YZF 350	PRG			1987-1994	DFS7-8P	4	4	Yes	2	No	No	DCK7-4	1	3
YZF 350	PRG			1995-1996	DFS7-7P	4	4	Yes	2	No	No	DCK7-4	1	3
YZF 350	PRG			1997-2006	DFS7-6P	4	4	Yes	2	No	Yes	DCK7-4	1	3
WR450F	PRG			2003-2006	DFS7-27P	1	1	No	1	No	No		1	1
WR450F	PRG			2007-2009	DFS7-23P	1	1	No	1	Yes	No		1	1
YZ450F	PRG			2006-2008	DFS7-20P	1	1	No	1	Yes	No		2,3	3
YZ450F (Fuel & Ignition)	PRG		Yes	2010-2013	DFS7-32	1	1	No	No	No	Yes			
YZF 450	PRG			2004-2009	DFS7-12P	4	1	Yes	2	No	Yes		1	1
YZF 450 (Low Cost)				2004-2009	DFS7-12	1	1	No	0	No	No			1
YZF450R/ YFZ450X EFI		RSP		2009-2012	DFS7-31	1	1	No	2	Yes	Yes	DCK7-9	3	2
YZF450R/YFZ450X EFI (Fuel & Ignition)			Yes	2009-2013	DFS7-35	1	1	No	No	No	Yes			
Rhino 450 (Low Cost)				2006-2010	DFS7-24	1	1	No	0	No	No	DCK7-2		1
Rhino 660 (Low Cost)				2004-2007	DFS7-13	1	1	No	0	No	No	DCK7-2		1
Rhino 660	PRG			2004-2007	DFS7-13P	4	1	Yes	2	No	Yes	DCK7-2	2,3	1
Raptor 660 (Low Cost)				2002-2005	DFS7-11	1	1	No	0	No	No			1
Raptor 660	PRG			2002-2005	DFS7-11P	4	4	Yes	2	Yes	Yes		1	1
Grizzly 660 (Low Cost)				2002-2008	DFS7-14	1	1	No	0	No	No			1
Grizzly 700FI				2007-2012	DFS7-25	1	1	No	0	No	No	DCK7-5		2
Grizzly 700 EFI (Programmable w/ Fuel Adjust)		RSP		2007-2008	DFS7-29	1	1	No	2	Yes	Yes	DCK7-5	3	2
Grizzly 700 EFI (Programmable w/ Fuel Adjust)		RSP		2009-2012	DFS7-30	1	1	No	2	Yes	Yes	DCK7-8	3	2
Raptor 700R (Low Cost)				2006-2012	DFS7-21	1	1	No	0	No	No	DCK7-1	1	2
Raptor 700R	PRG			2006-2012	DFS7-21P	4	1	No	2	No	Yes	DCK7-1		2
Raptor 700R (Fuel & Ignition)			Yes	2006-2013	DFS7-34	1	1	No	No	No	Yes			
Rhino 700FI		RSP		2008-2012	DFS7-26	1	1	No	0	No	No	DCK7-6	3	2
Rhino 700 (Fuel & Ignition)			Yes	2008-2012	DFS7-33	1	1	No	No	No	Yes			

TABLE REFERENCE	IGNITION TYPE	TABLE REFERENCE	CURVE MAKER KIT
1	12V CDI	1	DFS-1
2	12V Inductive Ignition	2	DIPK-6
3	Magneto CDI	3	DIPK-7
4	Magneto CDI with 12V Input Required		

PRG = Programmable

RSP = Remote Serial Programmer
Available - DRSP-1

FS DIGITAL IGNITION
APPLICATIONS

DYNATEK DRSP-1 FOR SELECT APPLICATIONS

For additional tuneability on EFI vehicles Dynatek offers the Remote Serial Programmer. The DRSP-1 plugs into the Dyna FS ignition module to enable the use of the 4 pre-programmed ignition advance curves as well as make fuel adjustments. There are 4 base fuel settings and the ability to add or subtract fuel in three RPM ranges. This wide range of adjustment will allow the user to tune for a wide variety of modifications. For advanced tuners the Curvemaker programming software and cable are included with the DRSP-1. Curvemaker will enable the user to access the advanced timing and accessory functions of the Dyna FS. The DRSP-1 only works with selected Dyna FS ignitions. It is not compatible with the stock ignition.



DRSP-1 KIT

DYNATUNE

The DynaTune kit monitors the fuel mixture (by installing the included Wide Band O2 sensor(s) in the exhaust). It then sends this information to the Dynatek FS Fuel and Ignition and automatically corrects it as you ride, letting you feel the changes as they happen. Each map that we offer has preset Air/Fuel ratio target values included that we find to be the best overall settings. This lets you simply plug in the unit and let it do the work.

SEE PAGE 3 FOR DETAILS

Two DynaTune kits are available:

The DT-1 - Single channel kit

The DT-2 - Dual channel kit



DYNA FS PROGRAMMING KITS

The DynaFS Programming Kit includes everything you need to reprogram the DynaFS programmable ignition. Easy to understand interface, simple saving, recalling and printing of curves, and quick reprogramming of the ignition make this the most user friendly programmable ignition software available. The kit includes the software to reprogram all available DynaFS programmable Ignition models and the programming cable. This kit is not recommended for inexperienced tuners.

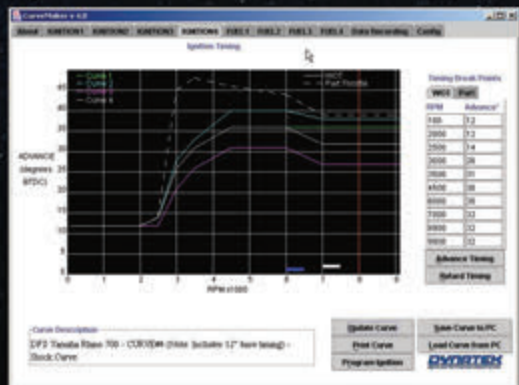


DFSPK-1
SERIAL PROGRAMMING KIT

USB PROGRAMMING KIT - DFS/2000i*

- ELIMINATES SERIAL ADAPTORS ON FS & 2000i IGNITIONS
- USES STANDARD USB A-B CABLE (INCLUDED)
- PLUGS INTO PROGRAMMING CONNECTOR ON DYNA FS AND 2000i IGNITIONS

*DYNA 2000i REQUIRES THE PH-1 ADAPTER.



DIPK-7
USB PROGRAMMING KIT

ATV/OFF-ROAD PRODUCTS

DQS-1 QUICK SHIFTER IGNITION KIT

This unit allows any single cylinder vehicle to have quick shifter functionality. It comes with "coil cap" style connector (Denso) for easy installation on most late model applications. For applications that do not have this style of coil the connector can be removed and the unit hard wired in.

- LONG TRAVEL SENSOR DESIGNED TO KEEP UNIT AWAY FROM RIDERS BOOT AND FROM THE BIKES CHAIN.
- SENSOR IS FULLY WATERPROOF AND IMMUNE TO TEMPERATURE
- OPTIONAL REMOTE QUICKSET ADJUSTER ALLOWS YOU TO ADJUST KILL TIMES ON THE FLY.



DOA-1
OPTIONAL
QUICKSET
ADJUSTER



QUICK SHIFTER

The Dynatek Quick Shifter (DQS) connects to the new Dyna FS Fuel and Ignition modules to allow full throttle, clutchless shifting.

This sensor is available in both "push" and "pull" styles depending on the direction the shift rod moves during an up shift. For most applications, a Shift Rod Kit is available.

- SEE PAGE 3 FOR DETAILS



DYNATEK ATV/OFF-ROAD ACCESSORIES

DYNATEK ATV/OFF-ROAD ACCESSORIES

NEW DYNATEK SPEED GOVERNOR

The new Dynatek Speed Governor is designed for industrial or other applications where a lower than stock speed limiter is required. The Dynatek Speed Governor allows full power to be used up to the programmed speed limit. Using factory connectors the Speed Governor is easy to install with no modifications to the factory harness.



DSG2-1 KAWASAKI TERYX 750

Year	Application	Part Number
DYNATEK SPEED GOVERNOR		
08-10	Kawasaki Mule 4010	DSG2-1
09-10	Kawasaki Teryx 750	DSG2-2
08-09	Arctic Cat Prowler 700	DSG10-1
07-12	Honda Rancher 420	DSG1-1

DYNATEK FI CONTROLLER

Through Dynatek's Fuel Injection Controller, the fuel circuits on current vehicles can be modified both richer and leaner than stock by as much as -100% to +250%* in any particular area of the power spread. Also, up to 3 pre-programmed Fuel Curve Maps are adjustable to your preference.

*** ONLY AVAILABLE WITH USB EQUIPPED MODELS, OLDER MODEL FI CONTROLLER ONLY HAVE -100%/+100% FUEL ADJUSTABILITY WITH ALL CHANGES MADE BY ADJUSTING THE POTENTIOMETERS .**

- SEE PAGES 4-5 FOR MORE DETAILS



Year	Model	Part Number
ATV/UTV MODELS		
ARCTIC CAT		
2010	450H1	DFCA-18
2009-2010	550H1	DFCA-21
2006-2010	700 EFI	DFCA-14
2008-2010	700H1	DFCA-22
2008	Prowler 700	DFCA-19
2008-2010	Thundercat 950	DFCA-20
2009-2010	Prowler 1000	DFCA-23
BOMBARDIER/CAN-AM		
2006-2010	Outlander/Renegade 800	DFCA-5
2008-2010	Outlander 400	DFCA-29
2008-2010	DS450	DFCA-24
2007-2010	Outlander 500	DFCA-25
2006-2009	Outlander 650	DFCA-26
2010	Outlander 650	DFCA-27
2011	Commander 800	DFCA-48
2011	Commander 1000	DFCA-49
HONDA		
2007-2012	Rancher 420	DFCA-10
2006-2012	Rincon	DFCA-1
2009	Big Red	DFCA-31
2008-2009	TRX700XX	DFCA-32

Year	Model	Part Number
KAWASAKI		
2008-2012	KFX450R	DFCA-11
2008-2012	Brute Force 750	DFCA-33
2009-2012	Teryx 750	DFCA-34
POLARIS		
2004	700 Twin EFI	DFCA-7
2006-2009	Ranger XP	DFCA-50
2005-2008	700 Twin EFI	DFCA-8
2005-2008	800 Twin EFI	DFCA-9
2010	Ranger 800 XP	DFCA-39
2009-2011	850 Twin	DFCA-37
2008-2009	RZR	DFCA-15
2009-2010	RZR-S	DFCA-17
2011-2012	RZR-S	DFCA-47
SUZUKI		
2009-2012	LTZ400	DFCA-44
2006-2007	LT-R450	DFCA-2
2008-2010	LT-R450	DFCA-43
2007-2009	KingQuad 450	DFCA-12
2009	KingQuad 500	DFCA-42
2005-2008	KingQuad 700	DFCA-3
2008-2012	KingQuad 750	DFCA-41
YAMAHA		
2009-2012	YZF-450R/X	DFCA-46
2009-2012	Grizzly 550	DFCA-45
2006-2012	Raptor 700R	DFCA-4
2007-2012	Grizzly 700	DFCA-13
2008-2012	Rhino 700	DFCA-16
DIRT/OFF-ROAD BIKE MODELS		
HONDA		
2010-2011	CRF250R	DFCD-7
2009-2011	CRF450R	DFCD-1
KAWASAKI		
2009-2012	KX450F	DFCD-2
SUZUKI		
2010-2012	RMZ250	DFCD-6
2008-2012	RMZ450	DFCD-3
2010-2011	RMZ450Z	DFCD-8
YAMAHA		
2010-2012	YZ450F	DFCD-4

DYNA COIL KITS

Dynatek offers our high output Mini Coils in a model specific kit with the necessary mounting hardware, wiring adapters and spark plug wire(s) for popular ATV applications. These kits take the hassle out of having to fabricate custom mounts for our coils.

- SEE PAGES 23 FOR AVAILABLE MODELS



DCK9-2 COIL KIT
FOR 08 POLARIS
RANGER RZR 800



DCK3-2
COIL KIT FOR 07-11 SUZUKI
KING QUAD 450/500

SPORTBIKE PRODUCTS

DYNA 2000 DIGITAL IGNITION

The Dyna 2000 for four cylinder engines represents a breakthrough in motorcycle ignition flexibility. The Dyna 2000 system consists of a state-of-the-art microprocessor controlled ignition module along with an adjustable Dyna dual sensor crank trigger. For the first time, you can actually set the ignition timing to what you require for maximum engine performance.

DYNA 2000 FEATURES:

- **FULLY STATIC TIMEABLE**- Set the timing accurately to the desired value without having the engine running.
- **INDEPENDENT 1/4 2/3 CYLINDER TIMING**- The Dyna dual sensor crank trigger uses one sensor for cylinders 1 & 4 and the other cylinder for 2 & 3 allowing you to accurately set the timing for each cylinder pair on most models.
- **BUILT-IN STATIC TIMING LIGHT**- An LED light built into the Dyna 2000 ignition allows you to monitor the crank trigger signal status and easily set the ignition timing.
- **FIVE DIFFERENT ADVANCE CURVES** -You can advance slowly to dial out ping on high compression motors or bring the advance in quickly on quick revving motors or select a curve in between to maximize the performance of your combination.
- **FOUR DIFFERENT RETARD MODES**- The Dyna 2000 is an ideal solution for turbo or nitrous combinations.
- **SAFETY INTERLOCK INPUT**- Keep your side stand safety switch functional or hook up a theft prevention switch, or activate a shift lever kill for road racing.

- **BROAD RANGE REV LIMITER**- Adjustable from 8500 to 16,000 rpm to let you run in any range you want.
- **DIGITAL TACH OUTPUT**- Your tachometer will run smooth and accurate, even at the rev limit.
- **HIGH ENERGY**- An innovative dwell control scheme maximizes spark energy to 16,000 rpm! The Dyna 2000 can be used with 2.2 ohm or 3 ohm coils.

- **TEST MODE**
- **EASY MOUNTING**
- **COMPLETE WIRING HARNESS**
- **LOW COST!**- The Dyna 2000 system in most cases costs less than a stock ignition box.



DYNA 2000 PROGRAMMABLE

Dynatek has added the ability to custom program the Dyna 2000 Sportbike ignition via a personal computer. Like our programmable Harley-Davidson and Dyna FS ignitions the Dyna 2000 can be programmed with a custom advance curve, retard mode curve and RPM limit using the optional DIPK-5 Curvemaker Serial Programming Kit. There are also 2 use programmable RPM outputs that can be used to activate a shift light or other RPM activated device.



DYNA 2000SE DIGITAL IGNITION

The Dynatek 2000SE Ignition is the latest from Dynatek.

It is a piggyback unit that allows you to control the ignition timing of your motorcycle's engine. The 2000SE uses direct coil driver technology and allows a high degree of timing adjustment.

DYNA 2000SE FEATURES:

- PC PROGRAMMABLE IGNITION MAPS
- +/- 20 DEGREE TIMING RANGE
- INDIVIDUAL CYLINDER TIMING
- GEAR POSITION TIMING
- TIMING CAN BE ADJUSTED BASED ON BOOST OR TEMPERATURE INPUTS
- BUILT IN LAUNCH LIMITER
- PIT LANE LIMITER
- QUICK SHIFTER COMPATIBLE



DYNA 2000 AND 2000SE APPLICATIONS

Model	Year	Part Number	Replacement Coil
HONDA			
500/550/750 4 cyl	1969-1978	DDK1-2	
CB 750/900/1100	1979-1983	DDK1-5	1,2,3
CB750/900/1100	1979-1983	DDK1-5C	1 INCLUDED
CBR 600F	1987-1990	DDK1-6	1,2,3
CBR 600F2	1991-1994	DDK1-7	1,2,3
CBR 600F3	1995-1997	DDK1-8	1,2,3
CB600F Hornet/599	1998-2006	DDK1-8	1,2,3
CBR 600RR	2003-2006	DDK1-14	
CBR 900RR	1993-1999	DDK1-9	1,2,3
CBR1100XX	1997-1998	DDK1-10	1,2,3
V65 Sabre/Magna	1984-1986	DDK1-12	4,5
CBR1100XX	1999-2007	DDK1-13	6
CBR600RR	2007-2012	D2K1-1SE	
CBR1000R	2008-2012	D2K1-2SE	
CBR1000RR	2008-2011	D2K1-3SE	
KAWASAKI			
KZ 900/1000/1100	1973-1985	DDK2-1	1,2,3
GPZ W/MOD	1981-1985	DDK2-1	1,2,3
KZ 900/1000/1100	1973-1985	DDK2-1C	1 INCLUDED
GPZ W/MOD	1981-1985	DDK2-1C	1 INCLUDED
KZ 650	1977-1980	DDK2-2	1,2,3
KZ 650	1977-1980	DDK2-2C	1 INCLUDED
KZ 750 (GPZ & TURBO)	1980-1984	DDK2-2	1,2,3
KZ 750 (GPZ & TURBO)	1980-1984	DDK2-2C	1 INCLUDED
GPZ 550	1981	DDK2-3	1,2,3
GPZ 550	1981	DDK2-3C	1 INCLUDED
ZX 11 /1100	1990-2000	DDK2-4	1,2,3
ZX10 /1000	1988-1990	DDK2-4	1,2,3
Ninja 1000R	1986-1987	DDK2-4	1,2,3
Ninja 900R	1984-1985	DDK2-4	1,2,3
ZX7/ZX7R/ZX7RR	1991-1998	DDK2-7	1,2,3
ZX 9R	1993-1997	DDK2-7	1,2,3
ZX 6R	1998-2001	DDK2-11	1,2,3
ZX 14	2006-2010	DDK2-19	

Model	Year	Part Number	Replacement Coil
KAWASAKI			
EX650 R	2006-2011	D2K2-1SE	
ERN6N	2006-2011	D2K2-2SE	
Versys	2006-2011	D2K2-3SE	
ZX6R	2007-2012	D2K2-4SE	
Z750	2007-2011	D2K2-5SE	
Z1000	2007-2012	D2K2-6SE	
ZX10R	2007-2010	D2K2-7SE	
ZX10R	2011-2013	D2K2-8SE	
ZG1400	2008-2013	D2K2-9SE	
Z14R	2006-2011	D2K2-10SE	
SUZUKI			
GS 550/750/850	1977-1981	DDK3-2	1,2,3
GS 1000/1100/1150	1977-1985	DDK3-2	1,2,3
GS 1000/1100/1150	1977-1985	DDK3-2C	1 INCLUDED
Katana 600/750/1100	1988-2006	DDK3-3	1,2,3
Bandit 1200S	1996-2005	DDK3-3	1,2,3
GSXR 1100/750 A&OC	1986-1992	DDK3-3	1,2,3
GSXR 1100 WC	1993-1997	DDK3-4	1,2,3
GSXR 750 WC	1993-1995	DDK3-4	1,2,3
RF 600/900	1994-1997	DDK3-4	1,2,3
GSX1300R Hayabusa	2003-2009	DDK3-5	
GSXR600/750	2004-2013	D2K3-1SE	
GSXR1000	2005-2013	D2K3-2SE	
GSXR1300R Hayabusa	2008-2013	D2K3-3SE	
BKING	2009-2013	D2K3-4SE	
YAMAHA			
FJ 1100/1200	ALL	DDK7-1	1,2,3
YZF-R1	2007-2008	DDK7-2	
R6	2006-2013	D2K7-1SE	
FZ1	2006-2010	D2K7-2SE	
FZ1	2011-2013	D2K7-3SE	
R1	2009-2011	D2K7-4SE	
MODULE ONLY			
DYNA 2000 4CYL PROGRAMMABLE	ALL	1101225	

AVAILABLE REPLACEMENT COILS:

- | | | |
|-----------------------------|---------------------------------------|---------------------------------------|
| 1 DC4-1 - 2.2 OHM Dual Plug | 3 DC1-2 - 3 OHM Dual Plug Mini | 5 DCK1-4 - 3 OHM Single Plug Mini Kit |
| 2 DC1-1 - 3 OHM Dual Plug | 4 DCK1-3 - 3 OHM Single Plug Mini Kit | 6 DCK1-5 - 3 OHM Single Plug Mini Kit |

DYNATUNE

The DynaTune kit monitors the fuel mixture (by installing the included Wide Band O2 sensor(s) in the exhaust). It then sends this information to the Dynatek 2000SE Ignition and automatically corrects it as you ride, letting you feel the changes as they happen. Each map that we offer has preset Air/Fuel ratio target values included that we find to be the best overall settings. This lets you simply plug in the unit and let it do the work.

Two DynaTune kits are available:

The DT-1 -Single channel kit

The DT-2- Dual channel kit



QUICK SHIFTER

The Dynatek Quick Shifter (DQS) connects to the new 2000SE and 3000 Fuel and Ignition modules to allow full throttle, clutchless shifting.

This sensor is available in both "push" and "pull" styles depending on the direction the shift rod moves during an up shift. For most applications, a Shift Rod Kit is available.

- SEE PAGE 3 FOR DETAILS



SPORTBIKE PRODUCTS

DYNA S ELECTRONIC IGNITION

The Dyna S is a complete self-contained electronic ignition system built with the latest state of the art engineering. The Dyna S is completely housed behind the ignition cover and uses a magnetic rotor with the original spark advancer, so the factory advance curve is maintained.

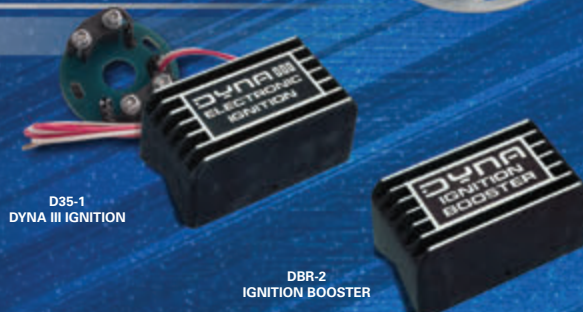


DS3-3 DYNA S
WITH DC10-1

DYNA III IGNITION/BOOSTER

DYNA III ELECTRONIC IGNITION

increases the high rpm coil energy storage by approximately 70%! The Dyna III allows the coils to build up to maximum current, and even at high rpm's, you get a more powerful consistent charge to the plugs for top operating efficiency. The sealed aluminum module is unaffected by dirt, moisture, oil or vibration.



D35-1
DYNA III IGNITION

DBR-2
IGNITION BOOSTER

DYNA IGNITION BOOSTER

Boost ignition power in your points equipped motorcycle. The unique Dyna Ignition Booster improves performance by transforming the usual inconsistent electrical surges into precisely controlled bursts of energy to the coil for more thorough and efficient combustion.

DYNA S, DYNA III & DYNA IGNITION BOOSTER APPLICATIONS

Model	Year	Part Number	Replacement Coils
DYNA S ELECTRONIC IGNITIONS			
HONDA			
350/400 4 CYL	1972-1977	DS1-1	DC8-1
500/550/750 4CYL	1969-1978	DS1-2	DC1-1
500 & 550 models are recommended to use the DC8-1.			
GL 1000	ALL	DS1-3	DC1-1
KAWASAKI			
900/1000/1100 4CYL AIR COOLED	1973-1985	DS2-1	DC1-1
KZ 550/650/750 4 CYL	ALL	DS2-2	DC1-1
SUZUKI			
550/750 4 CYL (KD)	1977-1978	DS3-1	DC1-1
550/750/850 4 CYL (ND)	1977-1981	DS3-2	DC1-1
1000/1100 4 CYL (ND)	1977-1981	DS3-2	DC1-1
1000/1100 4 CYL (ND)	1982-1983	DS3-2	DC1-1
GS 400 TWIN W/COILS	ALL	DS3-3C	DC10-1 INCLUDED

Model	Year	Part Number	Replacement Coils
DYNA S ELECTRONIC IGNITIONS <i>CONTINUED</i>			
DUCATI			
750 TWINS	1972-1974	DS4-1	DC10-1
MOTO GUZZI			
V35/V50/V65	ALL	DS5-1	DC10-1
DYNA III IGNITIONS			
BMW			
ALL MODELS	1970-1978	D35-1	DC2-1 for Dual Plug Heads
MOTO GUZZI			
BIG ENGINES	1974-1987	D37-1	DC10-1
DYNA IGNITION BOOSTERS			
SINGLE POINTS		DBR-1	
DUAL POINTS		DBR-2	



DYNA ARC-2

ASYNCHRONOUS RESTRIKING CDI

Dynatek offers the ARC-2 for 4 cylinder Motorcycle & Automotive applications. This CDI ignition is capable of producing over 50,000 Volts at the spark plug, and has the highest spark energy of any CDI on the market. It is designed to optimize the ignition of modified vehicles, providing the strong spark needed to develop peak power for turbocharged, nitrous oxide and high compression applications. Intelligent Spark Profiling in restrike mode allows for less delay between successive sparks. It also features a built in launch limiter for drag style launches as well as a built in retard mode. The lightweight and compact ignition will be offered in plug in kits for select motorcycle & automotive models that will make installation a breeze, with no need to cut into the stock harness. For other models, a universal install kit is available.

FEATURES

- SMALLEST LIGHTEST CDI ON THE MARKET
- OVER 189MJ DELIVERED TO THE COIL PER SPARK, THE HIGHEST OF ANY ON THE MARKET
- OVER 500V TO THE COIL PRIMARY
- OVER 50KV TO THE COIL SECONDARY (ASSUMING A 100:1 COIL)
- INTELLIGENT SPARK PROFILING (ISP) ALLOWS FOR LESS DELAY BETWEEN SUCCESSIVE SPARKS
- PROVIDES THIS HIGH LEVEL OF OUTPUT FROM AS LOW AS 8 VOLTS FROM THE BATTERY. WORKS WITH ANY 2 COIL OEM IGNITION, WITH OR WITHOUT FACTORY IGNITOR (SOME SYSTEMS MAY REQUIRE REPLACEMENT COILS)

- SPARK RESTRIKE UP TO 4500 RPM
- BUILT IN LAUNCH LIMITER, WORKS FROM 2000-11900 RPM
- BUILT IN PROGRAMMABLE RETARD FUNCTION. ADJUSTABLE FROM 2-20 DEGREES IN 2 DEGREE INCREMENTS.
- TACH OUTPUT

DARC-2
WITH DARC11-1 HARNESS

AVAILABLE HARNESS KITS

DARC3-1
SUZUKI GSX1300R



DARC11-2
MITSUBISHI ECLIPSE



DARC-2
WITH UNIVERSAL HARNESS



ARC-2 TECHNICAL SPECIFICATIONS:

OPERATING VOLTAGE:	8-20 VOLTS
OPERATING CURRENT:	7.0A @ 10,000 RPM
MAXIMUM OPERATIONAL RPM:	18,000 + RPM
IGNITION INPUTS:	2 RISING OR FALLING EDGE
IGNITION OUTPUTS:	2 INDEPENDENT CHANNELS
COIL PRIMARY ENERGY MAX:	189+ MJ
COIL PRIMARY VOLTAGE MAX:	500+ V
RESTRIKE WINDOW:	25 CRANKSHAFT DEGREES
LAUNCH LIMITER INPUT:	SINGLE WIRE, GROUND TO ACTIVATE LAUNCH LIMIT.
RETARD INPUT:	SINGLE WIRE, GROUND TO ACTIVATE TIMING RETARD
TACH OUTPUT:	12V SQUARE WAVE, 50% DUTY CYCLE
DIMENSIONS:	4" X 4.6" X 1.4"
WEIGHT:	1.25 LB.

Model	Year	Part Number
DYNATEK ARC-2		
ARC-2 Module Only	ALL	DARC-2
Universal Installation KIT	ALL	DARC-UNI
Universal Tach Adapter KIT	ALL	DARC-TA1
MODEL SPECIFIC INSTALLATION KITS		
HONDA		
CBR1100XX (Coils Included)	1999-2003	DARC1-1
KAWASAKI		
ZX10R	2003-2010	DARC2-3
ZX12R	2000-2005	DARC2-1
ZX14	2006-2010	DARC2-2
SUZUKI		
GSX1300R	1999-2009	DARC3-1
GSXR1000	2001-2007	DARC3-1
GSXR750	2000-2005	DARC3-1
YAMAHA		
R1	2007	DARC7-1
MITSUBISHI		
Evo 8	2003-2004	DARC11-1
Eclipse	1995-1999	DARC11-2
Evo 8 w/AEM EMS	2003-2004	DARC11-3
DODGE		
SRT-4	2003-2005	DARC12-1
HYUNDAI		
Genesis Coupe 2.0 Liter Turbo	2009-2012	DARC14-1

HIGH PERFORMANCE COILS

DYNATEK REPLACEMENT COILS

Dynatek ignition coils are high tech, top quality coils, designed for maximum performance. They produce spark voltages in excess of 30,000 volts and spark energies second to none. Dynatek coils are available in a wide variety of resistances and output configurations to allow easy replacement of stock coils. Dynatek coils work with factory electronic ignitions, points, and aftermarket ignitions. Choose from four body styles and five different primary resistance ranges to match your ignition needs. Advanced magnetic core technology of the Dynatek Mini Series Coils delivers high output in one of the smallest packages available. Great for customs where coils need to be hidden.

These high tech, top quality coils are designed for maximum performance. Dyna Coils are made to replace stock coils. Choose from three configurations and five variations of resistance for different applications. Dyna Coils work with point ignitions, aftermarket electronic ignitions and factory electronic ignitions. Before selecting a coil, check the coil primary resistance requirements as specified by the manufacturer of the ignition being used.

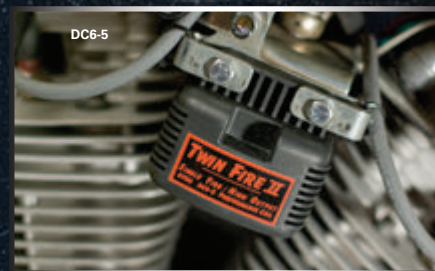


TWIN FIRE & MINI COILS

DYNATEK TWIN FIRE IGNITION COILS

Dyna Twin Fire Ignition Coils will enhance the benefits of, and is the perfect compliment to the DD2000-HD1EP and D2Ki Digital Ignition System. The DC6-4 coil has all the features users have come to expect from a Dyna coil; high voltage (greater than 30,000 volts) with fast rise times, and high energy. The Dyna Twin Fire coil is the new standard for performance and packaging efficiency for single fire ignition installations on Harley-Davidson® Motorcycles. The Twin Fire coil incorporates two individual performance ignition coils into one easy to mount package. This solves the problem of trying to mount two ignition coils on Harleys when installing single fire ignition systems. The DC6-5 Twin Fire Mini coil is only slightly larger than the stock Harley coil and uses the stock mounting bracket.

The DC6-5 Twin Fire Mini coil will fit under the tank on most XL and FLH models as well as in the stock location on the side of the motor for FXR models or rear of the motor for Dyna and Softail models. The DC6-4 is used for all dual spark plug head applications. The DynaTwin Fire coil can be used with any electronic ignition system that incorporates dwell control, but cannot be used with the DS6-2, Dyna S or similar ignitions.



DYNATEK MINIATURE SERIES COILS

Advanced magnetic core technology delivers high output in one of the smallest packages available. Great for customs where coils need to be hidden. These coils are designed for use with the Dyna 2000 and 3000 series ignitions, factory installed electronics, or other after-market ignitions that employ dwell control.

TWIN FIRE & MINI COIL FEATURES & BENEFITS:

- NO EXPOSED LAMINATIONS TO RUST AND DEGRADE PERFORMANCE.
- HIGH VOLTAGE AND PRIMARY TERMINALS MACHINED FROM BRASS.
- ULTRASONICALLY WELDED AND SEALED AGAINST MOISTURE.
- COMPACT SIZE FITS EASILY UNDER STOCK COVERS.
- PEAK GAP CURRENT IN EXCESS OF 50MA.
- HIGH IMPACT THERMOPLASTIC HOUSING.
- OVER 40,000 VOLTS PER OUTPUT.
- ACCEPTS 7 TO 8.8MM WIRES.
- 1 YEAR WARRANTY.



DC1-3, DC12-2 & DC6-6

DYNA COIL KITS

Dynatek offers our high output Mini Coils in a model specific kit with the necessary mounting hardware, wiring adapters and spark plug wire(s) for popular ATV and motorcycle applications. These kits take the hassle out of having to fabricate custom mounts for our coils.



DCK1-3 HONDA V-65 MAGNA COIL KIT

DYNA REPLACEMENT COILS AND APPLICATIONS

DYNA COILS	OHM	COLOR	# PER PACK-AGE	IGNITION	# OF OUTPUTS	APPLICATIONS
DC1-1	3	GREEN	2	DYNA 2000HD DYNA 2000I/D2KI DYNA "S" HD STOCK/DYNA"S"	DUAL	DUAL PLUG/SINGLEFIRE/STREET/RACE RACE ONLY (DRAG) IMPORT BIKE REPLACEMENT
DC1-2 MINI SERIES	3	BLACK	2	DYNA 2000HD DYNA 2000I/D2KI DYNA "S" STOCK	DUAL	DUAL PLUG/SINGLEFIRE/STREET/RACE RACE ONLY (DRAG) IMPORT BIKE REPLACEMENT
DC1-3 MINI SERIES	3	BLACK	1	STOCK	DUAL	SINGLE COIL PKG OF DC1-2 IMPORT BIKE REPLACEMENT
DC2-1	1.5	BROWN	2	DYNA "S" HD DYNA "S" BMW	DUAL	DUAL PLUG/DUAL FIRE DUAL PLUG CONVERSIONS
DC3-1	3	GREEN	2	DYNA 2000HD DYNA 2000I/D2KI DYNA"S" HD STOCK	SINGLE	SINGLE PLUG/SINGLE FIRE/STREET/RACE RACE ONLY(DRAG) IMPORT BIKE REPLACEMENT
DC3-2 MINI SERIES	3	BLACK	2	DYNA 2000HD DYNA 2000I/D2KI DYNA "S" STOCK/DYNA 2000	SINGLE	SINGLE PLUG/SINGLE FIRE/STREET/RACE RACE ONLY(DRAG) IMPORT BIKE REPLACEMENT
DC3-3 MINI SERIES	3	BLACK	1	STOCK	SINGLE	SINGLE COIL PKG OF DC3-2 IMPORT BIKE REPLACEMENT
DC4-1	2.2	GREY	2	DYNA 2000/4 STOCK	DUAL	IMPORT REPLACEMENT REPLACEMENT
DC6-1	3	GREEN	1	DYNA 2000HD DYNA 2000I/D2KI DYNA"S" HD	DUAL	SINGLE PLUG/DUAL FIRE/STREET/RACE RACE ONLY "H" STYLE

DC6-4	3	BLACK	1	DYNA 2000HD DYNA 2000I/D2KI	FOUR TOWER TWIN FIRE COIL	DUAL PLUG/SINGLE FIRE/STREET/RACE
DC6-5 MINI SERIES	3	BLACK	1	DYNA 2000HD DYNA 2000I/D2KI	TWIN FIRE II COIL-DUAL	SINGLE PLUG/SINGLE FIRE/STREET/RACE
DC6-6	0.5	BLACK	1	STOCK	DUAL	TWIN CAM REPLACEMENT CARB ONLY
DC6-7	0.4	BLACK	1	STOCK	DUAL	2001-2006 HD BIG TWINS, TOURING
DC7-1	5	BLACK	1	DYNA"S" HD POINTS HD	DUAL	SINGLE PLUG/DUAL FIRE/"H" STYLE POINTS APPLICATION REPLACEMENT
DC8-1	5	BLACK	2	DYNA"S" HD STOCK	DUAL	DUAL PLUG/SINGLE FIRE/STREET POINTS APPLICATION REPLACEMENT
DC9-1	0.7	BLUE	2	DYNA 4000	DUAL	RACE ONLY HIGH ENERGY
DC9-2	0.7	BLACK	1	DYNA 4000	FOUR TOWER TWIN FIRE COIL	RACE ONLY HIGH ENERGY
DC9-4	0.7	BLUE	2	DYNA 4000	SINGLE	RACE ONLY HIGH ENERGY
DC10-1	5	BLACK	2	DYNA "S"	SINGLE	SINGLE PLUG/SINGLE FIRE/STREET
DC11-1 MINI SERIES	0.5	BLACK	2	DYNA TC-88-2 DYNA TC-88-3	DUAL	DUAL PLUG CONVERSION STREET/RACE IMPORT BIKE REPLACEMENT
DC11-2 MINI SERIES	0.5	BLACK	1	DYNA TC-88-2 DYNA TC-88-3	DUAL	SINGLE COIL PKG OF DC11-1
DC12-1	0.5	BLACK	2	DYNA TC-88-2 DYNA TC-88-3 DYNA DSPT-1	SINGLE	STREET/RACE IMPORT BIKE REPLACEMENT
DC12-2	0.5	BLACK	1	DYNA TC-88-2 DYNA TC-88-3 DYNA DSPT-1	SINGLE	SINGLE COIL PKG OF DC12-1

These are general recommendations. Please see enclosed coil applications or contact technical support for recommendations.

DYNA IGNITION SYSTEM COIL REQUIREMENTS:

DYNA 4000 PRO IGNITION

Must use DC9-1, DC9-2 or DC9-4. The DYNA 4000 ignition system is designed for racing only and is matched to the characteristics of the DC9 series coil for optimum energy production.

SINGLE PLUG HEAD

Single Fire - Use two single output coils, street or strip.

Dual Fire - Use one dual output coil, street or strip.

DUAL PLUG HEAD

Single Fire - Use two dual output coils, street only.

Dual Fire - Use two dual output coils, street or strip.

Dual Plug Head, single fire racing applications Use two DC2-1, 1.5 ohm coils, connected in series for each cylinder. Since these coils are dual tower, one tower of each coil must be shorted to chassis ground.

DYNA S HARLEY-DAVIDSON

Recommended - DC7-1, DC8-1, DC10-1, DC3-1, DC6-1. Use coil with 5.0 ohms primary resistance for street use, 3.0 ohms primary resistance for racing applications.

DYNA S (NON-HARLEY)

Recommended - DC1-1. Use coil with 3.0 ohms primary resistance.

DYNA COIL KIT APPLICATIONS

Model	Year	Part Number
ARCTIC CAT		
Prowler 650	2006-2009	DCK10-1
Prowler 700	2009-2010	DCK10-2
XTZ1000	2009-2010	DCK10-3
AC450H1	2010	DCK10-4
M600 Snowmobile	2007-2011	DCK10-5
M800/1000 Snowmobile	2007-2011	DCK10-6
Thundercat 1000	2010	DCK10-7
700I	2009-2012	DCK10-8
Wildcat 1000	2012	DCK10-9
CAN AM		
Commander 1000	2011	DCK11-1
HONDA		
Rincon 650	2003-2005	DCK1-1
TRX450R	2004-2008	DCK1-2
V-65 Magna	1983-1986	DCK1-3
V-65 Sabre	1984-1985	DCK1-4
CBR1100xx	1997-2007	DCK1-5
Ruckus	2005-2008	DCK1-6

Model	Year	Part Number
HONDA CONTINUED		
CRF405R	2009	DCK1-7
SH150 Scooter	2010	DCK1-8
Rancher 420	2007-2012	DCK1-9
Honda Big Red	2009-2011	DCK1-10
KAWASAKI		
650/700/750 Prairie	ALL	DCK2-1
650/700/750 Brute Force Carbureted	ALL	DCK2-1
KFX450R	2008-2010	DCK2-2
KFX450R	2007	DCK2-3
Teryx 750	2008	DCK2-4
Teryx 750 750 EFI	2009-2010	DCK2-6
KFX-400	2003-2006	DCK2-5
Brute Force 750 EFI	2008-2010	DCK2-7
KTM		
450/505/525 SZ/XC	2008-2011	DCK13-1

Model	Year	Part Number
SUZUKI		
LT-R450	2006	DCK3-1
LTZ-400	2003-2004	DCK3-2
Sv1000	2003-2007	DCK3-3
King Quad 450/500	2007-2011	DCK3-4
YAMAHA		
Raptor 700R	2006-2012	DCK7-1
Rhino 450/660	2004-2007	DCK7-2
YZF350 Banshee	1987-2006	DCK7-4
Grizzly 700	2007	DCK7-5
Grizzly 700	2008-2011	DCK7-8
Rhino 700	2008-2010	DCK7-6
V-Star 1100	2005-2008	DCK7-7
YZF450R / YZF450X	2009-2011	DCK7-9
POLARIS		
Sportsman 700-800	2005-2007	DCK9-1
Ranger RZR 800	2008	DCK9-2
Ranger RZR 800	2009	DCK9-3
RMK800 Snowmobile	2011-2012	DCK9-4

DRAG RACE PRODUCTS

DYNA 4000 SUPER PRO

The DYNA 4000 Super Pro Ignition is a high energy inductive ignition designed to meet the needs of the professional drag racer. The DYNA 4000 includes a built-in two stage rev limiter that is used for launch control and over rev protection.

The best ignition imaginable for a high rpm, high horsepower engine would have a long spark duration and deliver high spark energy. This is exactly what the DYNA 4000 has been designed to accomplish. By using specially designed coils, and special microprocessor based control circuitry to manage the high currents that these coils draw, the DYNA 4000 can deliver four times the spark energy of the most popular CD booster all the way up to 17,000 rpm! These high energy sparks also have the desirable long duration characteristics of inductive ignitions. This translates directly into better engine performance across the board.

The DYNA 4000 is not only a powerful ignition system, but also the smoothest two stage rev limiter available. The DYNA 4000 has a programmable launch limiter activated by a clutch switch to help maintain consistency at the starting line. A programmable over rev limiter is also implemented to prevent engine damage due to drive line breakage or missed shifts. The DYNA 4000 launch system is the choice of world champion drag racers due to its rock steady limiting characteristics. Other popular launch limiters cause engine harming banging and popping due to their unsteady limiting. The DYNA 4000 holds the rpm to a perfectly steady and smooth limit while preparing to launch.



DYNA 4000 SUPER PRO IGNITION FEATURES:

- USES THE DYNA PRO SERIES CRANK TRIGGER AS A PICKUP. THE DYNA 4000 SUPER PRO IS SIMPLY CONNECTED BETWEEN THE TRIGGER AND THE IGNITION COILS.
- AUTOMATICALLY SHUTS OFF WHEN THE ENGINE IS NOT RUNNING, EVEN IF THE IGNITION POWER IS LEFT ON. THIS PREVENTS BATTERY DRAIN AND COIL OVERHEATING.
- BUILT IN DIAGNOSTIC CIRCUITRY AND AN INDICATOR LED THAT CAN BE USED TO STATIC TIME THE MOTOR.
- MUST BE USED WITH DYNA DC9-1, DC9-2, OR DC9-4 COILS FOR PROPER OPERATION.
- AVAILABLE AS BOTH A DUAL OUTPUT UNIT FOR SINGLE PLUG PER CYLINDER ENGINES AND AS A QUAD OUTPUT UNIT FOR DUAL PLUG PER CYLINDER ENGINES.
- AVAILABLE FOR BOTH IN LINE FOUR CYLINDER AND HARLEY DAVIDSON ENGINES.
- THE DYNA 4000 SUPER PRO IS HOUSED IN AN EASILY MOUNTED CASE, APPROXIMATELY 6" X 3 3/4" X 1 1/4".



DYNA 4000 APPLICATIONS & ACCESSORIES

Part Number	Application	Module	Coils	Plug Wires
DYNA 4000 IGNITION MODULE ONLY				
DP4000-HD1S	HD SINGLE PLUG, DUAL FIRE			
DP4000-HD2S	HD DUAL PLUG SINGLE FIRE			
DP4000-HDTF	HD TOP FUEL, DUAL PLUG, DUAL FIRE			
DP4000-1S	4 CYLINDER, SINGLE PLUG			
DP4000-2S	4 CYLINDER, DUAL PLUG			
DP4000-1S-SC	4 CYLINDER, SINGLE PLUG KIT, SLIDER CLUTCH			
DP4000-2S-SC	4 CYLINDER, DUAL PLUG KIT, SLIDER CLUTCH			
DYNA 4000 IGNITION KITS				
DPK4-HD1DF	HD SINGLE PLUG, DUAL FIRE	DP4000-HD1S	DC9-1 (1)	DW800
DPK4-HD1SF	HD SINGLE PLUG, SINGLE FIRE	DP4000-HD1S	DC9-4 (2)	DW800
DPK4-HD2DF	HD DUAL PLUG, DUAL FIRE	DP4000-HD2S	DC9-1 (2)	DW800
DPK4-HD2SF	HD DUAL PLUG, SINGLE FIRE	DP4000-HD2S	DC9-4 (4)	DW800
DPK4-HDTF	HD TOP FUEL, DUAL PLUG, DUAL FIRE	DP4000-HDTF	DC9-1 (2)	DW800
DPK4-1	4 CYLINDER, SINGLE PLUG KIT	DP4000-1S	DC9-2 (1)	DW800
DPK4-2	4 CYLINDER, DUAL PLUG KIT	DP4000-2S	DC9-2 (2)	DW800
DPK4-1-SC	4 CYLINDER, SINGLE PLUG KIT, SLIDER CLUTCH	DP4000-1S-SC	DC9-2 (1)	DW800
DPK4-2-SC	4 CYLINDER, DUAL PLUG KIT, SLIDER CLUTCH	DP4000-2S-SC	DC9-2 (2)	DW800

Part Number	Application	Module Type
DYNA 4000 IGNITION ACCESSORIES		
DRD-1	DYNA 4000 REMOTE DISPLAY	
TSRAM	2&4 CYL. PROGRESSIVE	RETARD MODULE
TSRM-2	2 CYL.	RETARD MODULE
DSC-2	SHIFT COUNTER (6 SPEED)	SHIFT COUNTER
DCT1-5	HON CB750, 900, 1100	CRANK TRIGGER
DCT1-6	HON CBR 600F	CRANK TRIGGER
DCT1-10	HON CBR 600 F2, 600 F3	CRANK TRIGGER
DCT1-10	HON CBR 1100XX	CRANK TRIGGER
DCT1-10	HON CBR 900 RR	CRANK TRIGGER
DCT2-1	KAW/KZ	CRANK TRIGGER
DCT2-4	KAW ZX10 1000, ZX 1100, NINJA 900R/1000R	CRANK TRIGGER
DCT2-7	KAW ZX7, ZX7R, ZX7RR, ZX9R	CRANK TRIGGER
DCT2-11	1998-2000 KAWZX6	CRANK TRIGGER
DCT3-2	SUZ 750/1100/1150	CRANK TRIGGER
DCT3-3	SUZ 86-92 GSXR, BANDIT 1200 S	CRANK TRIGGER
DCT3-3	KATANA 600/750/1100	CRANK TRIGGER
DCT3-4	SUZ 93-95 GSXR 750 WC	CRANK TRIGGER
DCT3-5	SUZ HAYABUSA 2003-2009	MAGNETIC PICKUP
DCT7-1	YAMAHA FJ 1100, 1200	CRANK TRIGGER
DCTHD	HARLEY-DAVIDSON	CRANK TRIGGER
DBTR-1P	1979-1983 HON CB 750, 900, 1100	BILLET TIMING ROTOR
DBTR-2P	1973-1985 KAW KZ 900, 1000, 1100	BILLET TIMING ROTOR
DBTR-3P	SUZ GS 550, 750, 1000, 1100	BILLET TIMING ROTOR

NOTE FOR ALL DYNA 2000 DCT APPLICATIONS ADD "A" TO END OF PART NUMBER



PRO SERIES CRANK TRIGGER

The Dynatek Pro Series Crank Trigger is a crankshaft pickup for use with the Dyna 2000 Sportbike and Dyna 4000 Pro Ignition System. The Pro Series Pickup consists of a blue anodized aluminum base plate with two injection molded pickup assemblies. The Pro Series Crank Trigger is a superior pickup for the 4000 for the following reasons:

FEATURES

- **IMPROVED NOISE MARGIN** - The Pro Series Crank Trigger provides a stronger pickup signal with more distinct high and low voltage levels for improved triggering of the ignition in harsh environments.
- **TOTAL IMMUNITY TO ENGINE GROUNDING PROBLEMS** - The Pro Series Crank Trigger is electrically isolated from the engine case, giving total immunity to electronic problems associated with inadequate engine grounding.
- **PRE-WIRED FOR THE DYNA 2000 DYNA 4000 IGNITION** - The Pro Series Crank Trigger is a direct plug in!
- **USES STANDARD DYNA 4000 MAGNET ROTORS**
- **SHORTER MODULE HEIGHT** - The Pro Series Crank Trigger modules are 1/2" tall (Dyna S is 3/4" tall) allowing them to fit under GSXR ignition covers without modification.



DCT-3 CRANK TRIGGER FOR SUZUKI

- **LIGHTER WEIGHT**
- **LOWER COST**

DIGITAL REMOTE DISPLAY

DYNA 4000 ACCESSORIES

The DYNA Digital Remote Display is a companion product for use with the DYNA 4000 Super Pro ignition. The Remote Display simply plugs into a pigtail on the Super Pro harness to give you access to the following features:

- **REAL TIME DIGITAL READ OUT OF ENGINE RPM** - Set low or high rpm limit from handle bar area with engine running.
- **BOTH REV LIMITERS CAN BE SET FROM 2000 TO 16000 RPM IN 200 RPM INCREMENTS.**
- **CLUTCH SWITCH INDICATOR LED** - allows precise adjustment of clutch switch operation.
- **TEST MODE** - allows all ignition system functions to be tested with the engine off.

In Test Mode you can cause the ignition to create sparks at a simulated rpm with the engine not running. All ignition functions work, rev limits, shift kill function, and tach output. This allows you to test all other accessories attached to the ignition system also, such as shift light, data recorder, or other devices.



DRD-1

DYNA BILLET ROTOR

DYNA 4000 ACCESSORIES

Dyna Billet Rotors allow simple replacement of the mechanical advancer assembly and ignition rotor with an attractive one piece anodized rotor. The Dyna Billet Rotor is laser etched with accurate timing marks to make ignition setup a breeze. The Dyna Billet Rotor comes in a blue anodized version with two magnets installed for use with the Dyna 4000 ignition as well as in a black anodized version with one magnet installed for use with other ignitions such as the Dyna 2000.



DBTR-3 & 3P
BILLET ROTORS

TWO STAGE RETARD MODULE

TIMING CONTROL

The Dynatek Two Stage Retard Module (P/N TSRAM) now offers progressive timing retard or advance in 2 separately adjustable stages. The new TSRAM is adjustable for 0-20 degrees of ignition timing retard in 2 degree increments over a 4 second time span in 1/4 second increments. It can also be used as a progressive timing advance device so that the user may start off with a retarded timing setting and then build the timing back in over a set time span. This is adjustable from 20-0 degrees and 0-4 seconds in 1/4 second increments. If more than 2 stages of timing control are desired, 2 TSRAM modules may be connected in series. The new TSRAM can be used for both 4 cylinder and V-Twin applications where the Dyna 4000 ignition system is used.



TSRAM

DYNA WIRES

SPARK PLUG WIRES

Dynatek "Dyna" Wires are made from high grade automotive, silicon jacketed, high tension cable. All wires are supplied with finished spark plug boot ends and loose coil terminals to allow the final length to be determined by the user. Wires are available with a solid copper core for use on older vehicles where electrical interference is not an issue. For use on new vehicles with electronic advance ignitions or other sensitive electronic equipment, use DYNA suppression wires with a high grade graphite core for best performance and electrical noise suppression. Both wire types ensure maximum energy transfer.



DRAG RACE ACCESSORIES

SHIFT COUNTER

DYNA SHIFT COUNTER

The Dyna Shift Counter is the missing link of the chain of systems on a drag bike. The Shift Counter provides the proper interaction between the air shifter system, the ignition system, the transmission, and other systems.

The Shift Counter consists of a small box, approximately 3" x 2.5" x 1", with six screw terminals on one end. Above each screw terminal is an LED lamp to indicate which terminal (or gear) is active. When a terminal is active, it is a source of 12 volts which can be used to activate other devices.

The Shift Counter must be used in conjunction with an electric switching valve on the air shift system (electric over air setup). The Shift Counter trigger input is connected to the handle bar electric shift button. When the electric shift button is pressed, the Shift Counter is triggered and rotates it's outputs to the next gear. At the time of the 1-2 shift, the Shift Counter will deactivate the 1st gear screw terminal and activate the 2nd gear terminal. During the shift the Shift Counter will generate a shift kill pulse of the selected duration to kill the ignition during the shift. When the Shift Counter is used on a vehicle, an air kill switch is no longer necessary.

The Shift Counter will continue to function similarly each time the shift button is pushed, rotating it's outputs on each successive shift until the vehicle is in high gear.

SHIFT COUNTER FEATURES:

- BUILT-IN PROGRAMMABLE ELECTRONIC SHIFT KILL (REPLACES FAILURE PRONE, NOT EASILY ADJUSTABLE, MECHANICAL AIR KILL SWITCHES) INCLUDES 1-2 AUTO, 1-2-3 AUTO AND 1-2-3-4 AUTO MODES.
- GEAR SELECTOR OUTPUTS ALLOW YOU TO CONTROL OTHER DEVICES ACCORDING TO CURRENT GEAR SELECTION. YOU CAN ACTIVATE MULTI-STAGE NITROUS SYSTEMS, WASTE GATES, FUEL SYSTEMS, TIMING CONTROL, OR ANYTHING ELSE ACCORDING TO TRANSMISSION GEAR.
- CAN AUTOMATICALLY CONTROL SEMI-AUTOMATIC TRANSMISSION KILL SEQUENCES.
- SHIFT KILL CAN BE SET AT 20, 30, 40, 50, 60, 70, 80 OR 90 MILLISECONDS
- PLUGS RIGHT INTO THE DYNA 4000 SUPER PRO IGNITION KILL INPUT (AND CAN BE USED WITH OTHER IGNITIONS)



DYNA SHIFT MINDER

The Dyna Shift Minder System is the ultimate in racing shift light products. The Shift Minder System consists of an attractive billet aluminum Shift Light and the Shift Minder control module. The Dyna Shift Light is a hallmark of the quality, reliability, and innovation that Dynatek strives to include in every product. Machined billet aluminum with an attractive black and gold anodize finish contribute to a custom rugged appearance. The Dyna Shift Light is more than the most attractive shift light on the market, it is also track proven to be the most reliable. Repeated track testing on Pro Stock drag vehicles has proven the Dyna Shift Light to be capable of withstanding the rigors of racing with highly extended bulb life compared to other products.

The Dyna Shift Light is activated by the Dyna Shift Minder control module. The Shift Minder control module is a small electronic box which monitors the engine rpm in order to trigger the Shift Light at precisely the right time. The Shift Minder control module has been designed with extremely accurate circuitry to insure triggering accuracy to better than 1%. The Shift Minder control module is adjustable to switch at any of 64 different rpm settings with a 125 rpm increment between settings. The Shift Minder control module is self contained and requires no additional parts for rpm switch point selection.



MINI SHIFT LIGHTS

The DSL-2 is a small, lightweight LED based shift light for use with the Dyna Shift Minder or any aftermarket RPM switch. It may also be used alone with the RPM activated outputs used on the Dyna FS ignitions and new Dyna 2000 PC Programmable Sportbike ignition. Available in a variety of anodized colors to match your color scheme.

DSL-2
SHIFT LITE MINI



DRL-500 MULTI FUNCTION RPM LIMITER

The DRL-500 Module is an add-on multi-function rev-limiter that will work with all +12volt inductive ignition systems. The DRL-500 cannot raise the stock rev-limit. The DRL-500 Module will not work with OEM capacitive discharge (CDI) ignitions.

- 4-CHANNEL RPM LIMITER, 100RPM RESOLUTION
- LAUNCH LIMITER, 50RPM RESOLUTION, OPTIONAL HANDLEBAR RPM SWITCH
- VEHICLE SPEED LIMITER
- SHIFT KILL INTERRUPT, 0° TO 45° RETARD OR KILL, 30MS TO 250MS INTERRUPT TIME
- RPM ACTIVATED SWITCHES (X2)
- USB PROGRAMMABLE
- STATUS LED
- DATA RECORDER: HOUR METER - NUMBER OF ENGINE STARTS - MAXIMUM ENGINE SPEED - SECONDS NEAR REV LIMIT - BATTERY VOLTAGE - HISTOGRAPH OF RPM



VOLTAGE & CHARGE MONITORS

The Dyna Voltage Monitor is a necessity for any battery ignition vehicle that does not have a charging system such as many race vehicles. The Voltage Monitor gives a clear indication of battery condition at any time with a quick glance at the three indicator LED's. The control electronics are housed in a small easy to mount case and are epoxy encapsulated to form a tough durable unit. The Voltage Monitor can be used on any vehicle with a 12 volt battery system and has three indicator LED's to show battery condition: green, amber, and red. When the green LED is on, the battery is charged. When the amber LED is on, the battery is starting to get low. When the red LED is on, the battery is low and should be recharged before further use.

The Dyna Charge Monitor is a valuable addition to vehicles with a battery ignition and a charge system as found on nearly all stock vehicles. The Charge Monitor allows easy determination of the operational state of the charging system with a quick glance at the indicator LED's. The Charge Monitor can be used on any vehicle with a 12 volt battery/charge system and has three indicator LED's to show the charge status: red, amber, and red. When the right most red LED is on, the battery is being overcharged due to a faulty voltage regulator. When the green LED is on, the battery is being charged at a normal voltage. When the left most red LED is on, the battery voltage is getting very low and the charge circuit or battery is failing.

DVM-1



DCM-1

DRL-300 REV LIMITER

The DRL300 has an improved clamping capability, and more outputs than the DRL200. The DRL300 can clamp up to 4 of our blue (low impedance) coils. This means it can be used on drag bikes, and many other applications it could not manage before (automotive HEI ignitions). In addition, the output stage has also added a separate kill input. This input works separate of the rev limiter and can function even when the rev limiter has no power. This will kill the spark whenever a 12V signal is applied to the input.



DRL-400 REV LIMITER

The Dyna DRL-400 Two Stage Rev Limiter has been specifically designed to maximize launch performance and over-rev protection in drag racing. The DRL-400 allows a precisely controlled launch rpm limit to be set, while also guaranteeing against over-rev damage due to missed shifts or drive train breakage. Selection between the launch limit and the upper over-rev limit is usually made through the use of a clutch lever switch. Both rpm limits are adjustable via two knobs on the DRL-400. The DRL-400 constantly monitors the engine rpm with great precision and randomly deletes ignition pulses to hold the engine exactly at the desired rpm. The DRL-400 can hold a 270 horsepower engine to a steady launch rpm with less than +/- 50 rpm wavier. Other launch rpm limiters typically make the engine rpm waive through a pounding oscillation. This can be very hard on expensive racing components. The DRL-400 works with all inductive electronic ignitions on 2 and 4 cylinder engines. It is housed in a 3 3/4" x 2 3/8" x 1" plastic case with integral mounting flanges.



DYNA SHIFT SYSTEMS & ACCESSORIES

Kit Number	Application	Kit Number	Application	Kit Number	Application
DYNA SHIFT SYSTEMS		DYNA RPM LIMITERS		DYNA WIRES	
DSL-1	SHIFT LITE	DRL-300	INDUCTIVE RPM LIMITER	DW-200	BLACK SILICONE, 7 MM
DSL-2	SHIFT LITE, MINI (SPECIFY COLOR) (Black, Silver, Red, Green, Blue)	DRL-300CDI	MAGNETO CDI RPM LIMITER	DW-300	RED SILICONE, 7 MM
DSM-2	SHIFT MINDER 2 CYL	DRL-400	2 STAGE REV LIMITER	DW-600	BLK SILICONE, 7MM, SUPP
DSM-2HD-EFI	SHIFT MINDER 2 CYL 2007-2011 H-D EFI MODELS	DRL-400-HD	2 STAGE REV LIMITER HD	DW-800	GREY SILICONE, 8MM, SUPP
DSM-2H	SHIFT MINDER 4 CYL	DRL-400-HD-EFI	2 STAGE REV LIMITER HD 2007-2011 H-D EFI MODELS	DW-1100	BLACK SILICONE, 7MM, SUPP
DSM-4	SHIFT MINDER 4 CYL	DRL-500-UNI	2 STAGE REV LIMITER 4 CHANNEL UNIVERSAL	DW-1200	GREY SILICONE, 8MM SUPP
DSM-4H	SHIFT MINDER 4 CYL	DRL-500-4R	2 STAGE REV LIMITER 4 CHANNEL RIGHT SIDE +12V	DYNA MONITORS	
DSMS-2	SHIFT MINDER SYS 2 CYL	DRL-500-4L	2 STAGE REV LIMITER 4 CHANNEL LEFT SIDE +12V	DCM-1	CHARGE MONITOR
DSMS-2HD-EFI	SHIFT MINDER SYS 2 CYL 2007-2011 H-D EFI MODELS	DRS-500	REMOTE SWITCH FOR DRL-500	DVM-1	VOLTAGE MONITOR
DSMS-2H	SHIFT MINDER SYS 4 CYL	DYNA TACH ADAPTERS		DYNA BOOSTERS	
DSMS-4	SHIFT MINDER SYS 4 CYL	T-101	TACH ADAPTER	DBR-1	SINGLE POINTS
DSMS-4H	SHIFT MINDER SYS 4 CYL	T-103	TACH ADAPTER	DBR-2	DUAL POINTS
TOOLS		T-105	TACH ADAPTER	DYNA COIL BRACKET	
CT-1	SPARK PLUG WIRE CRIMP TOOL			DCB-1	BMW
				DCB-2	SOFTAIL BRACKET

•IGNITIONS •COILS •FUEL INJECTION CONTROLLERS •REV LIMITERS PLUG WIRES •SWITCHES •IGNITION BOOSTERS

DYNATEK
dyna performance electronics



TEL: (800) 928-3962

E-MAIL: INFO@DYNAONLINE.COM